

Adams Street at Squantum Street/ Rowe Street Intersection Improvements

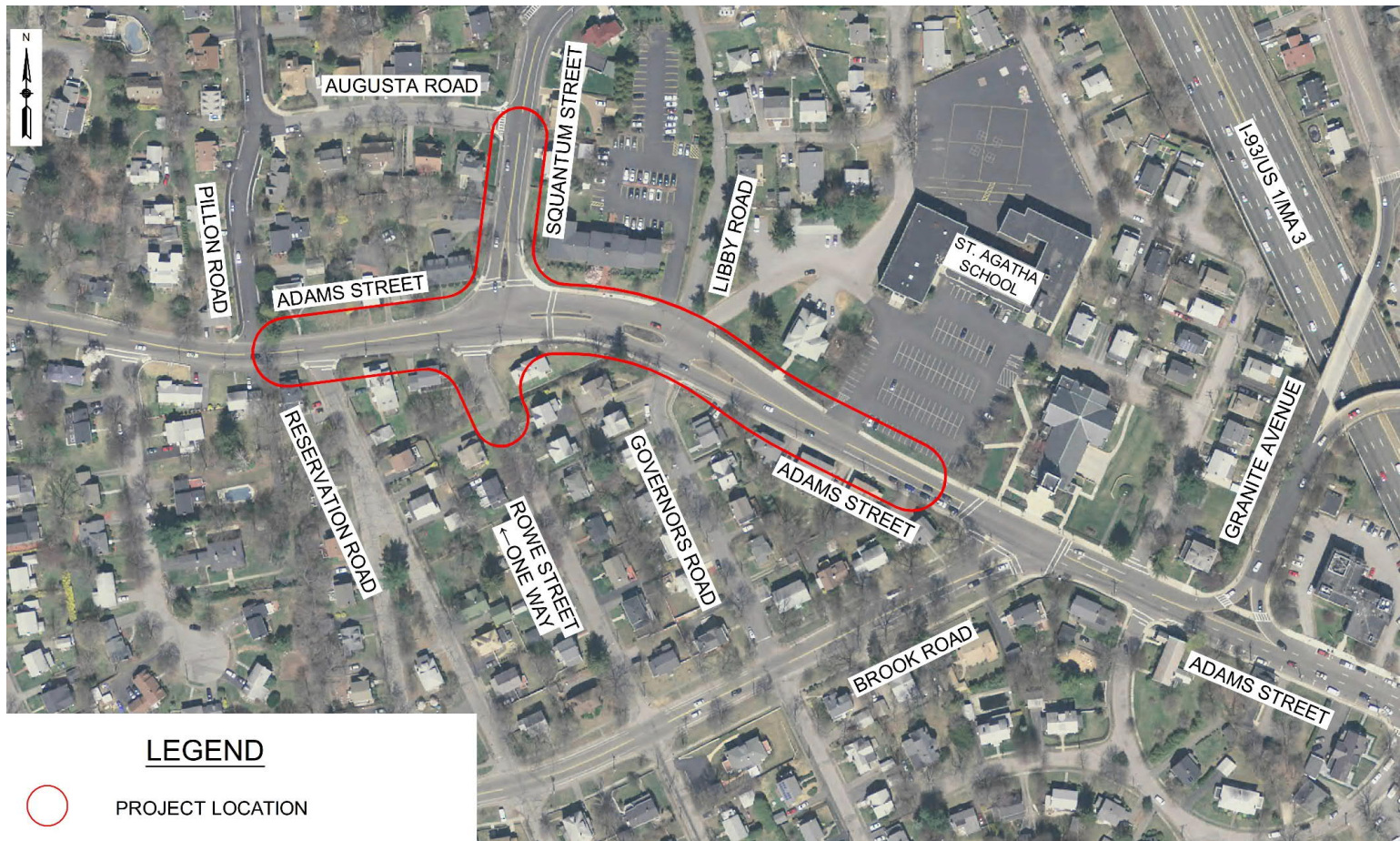
Public Informational Meeting
February 28, 2023



Design Consultant

- Chris Roy, P.E. – Project Manager
- Justin Curewitz, P.E., PTOE, RSP – Lead Traffic Engineer

Project Limits



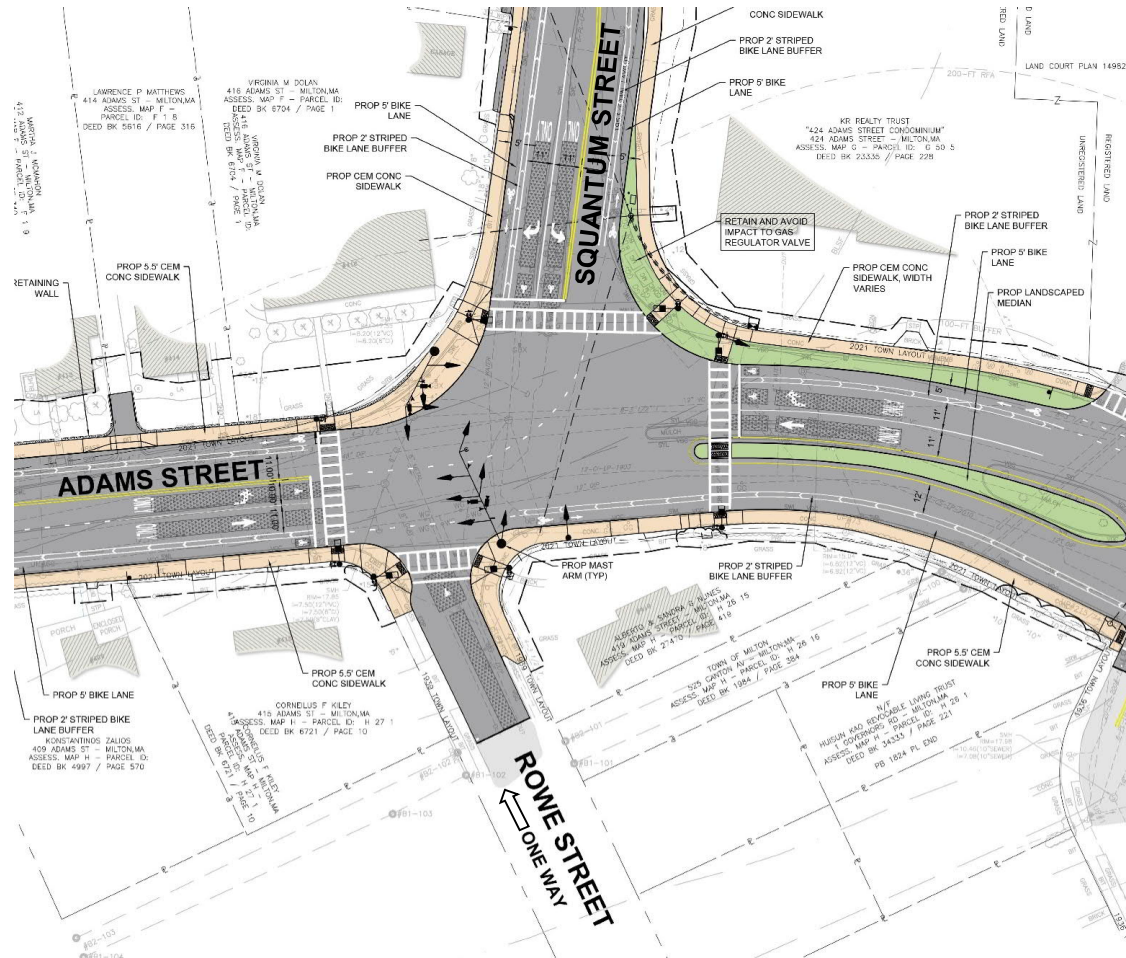
Intersection Improvements

- MassDOT Transportation Improvement Program Project
- Goal to improve safety and operations at intersection for all users (vehicles, pedestrians, and bicycles)
- Project is in the 25% design stage
- MassDOT seeking resident feedback of three options:
 - Option 1: Eastbound Left-Turn Lane
 - Option 2: Rowe Street One-Way Southbound
 - Option 3: Rowe Street Closure

Option 1: Eastbound Left-Turn Lane

- Installs dedicated left-turn for Adams Street EB
- Installs dedicated right-turn for Adams Street WB
- New traffic signal installation
- Improved pedestrian and bicycle accommodations
- Maintains all existing turning movements at intersection
- Would result in longer queues along Adams Street EB and Squantum Street SB

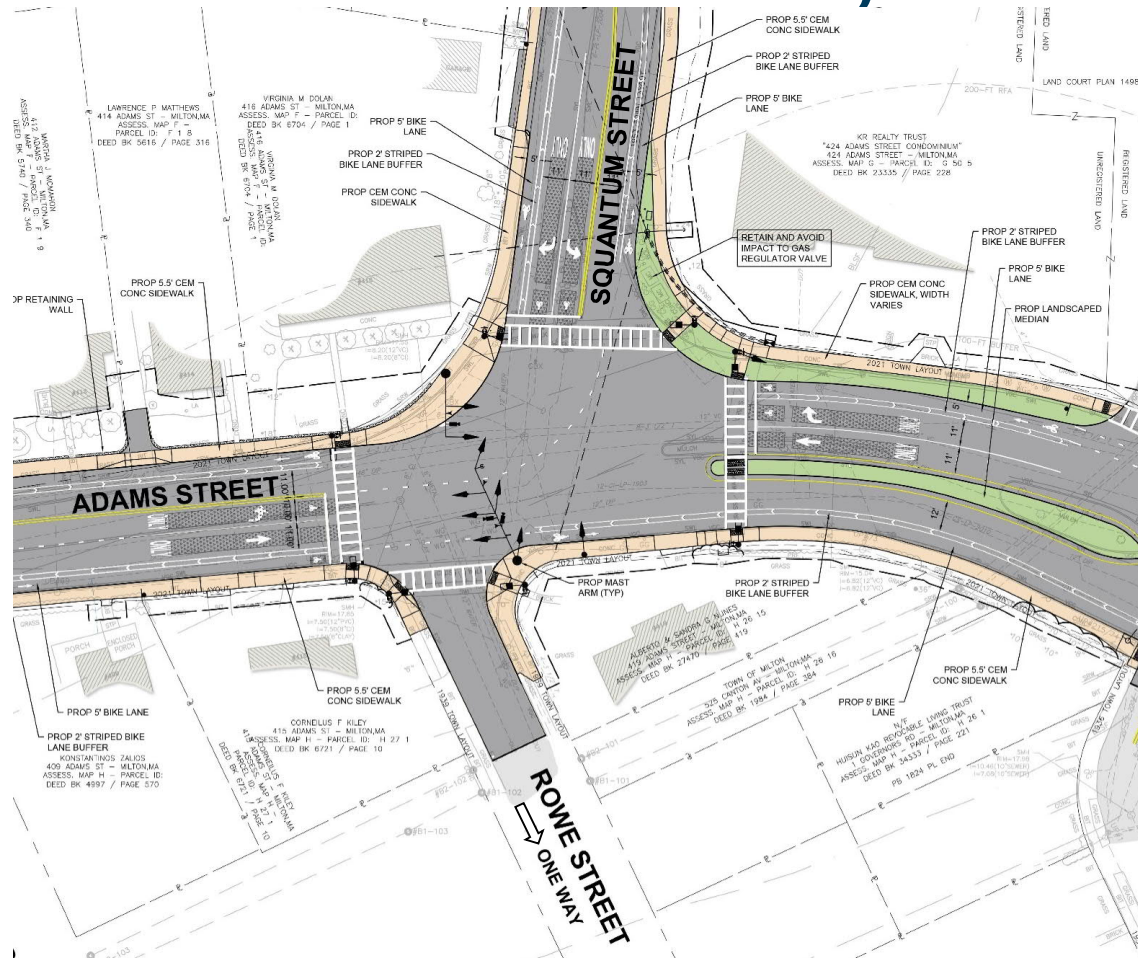
Option 1: Eastbound Left-Turn Lane



Option 2: Rowe Street One-Way Southbound

- Identical to Option 1, but reverses Rowe Street to one-way southbound
- Eliminates one (1) signal phase, small reductions in delays
- Would result in slight increases to travel times exiting Rowe Street
- Could result in increased cut-through traffic from Squantum Street to I-93 SB in the afternoon peak period

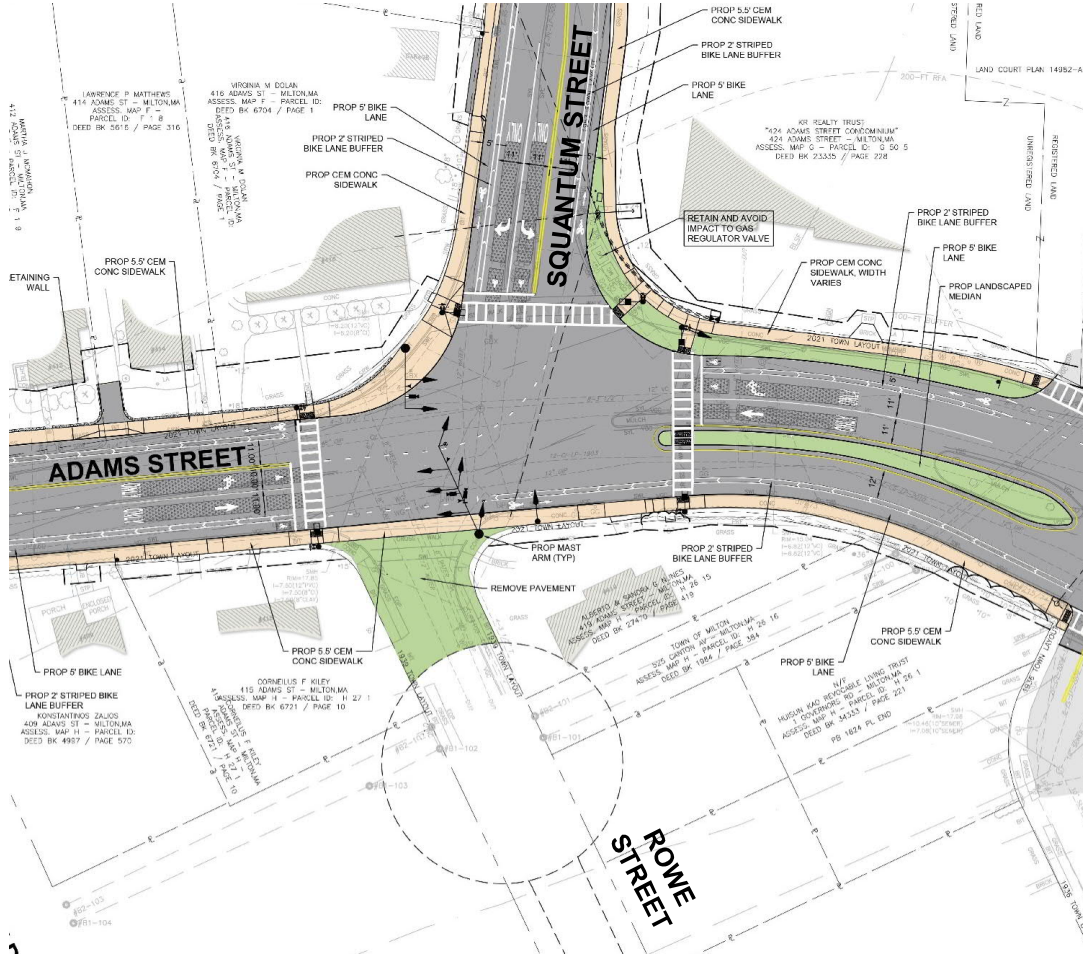
Option 2: Rowe Street One-Way Southbound



Option 3: Rowe Street Closure

- Identical to Option 1, but “dead-ends” Rowe Street at Adams Street with installation of a cul-de-sac
- Eliminates one (1) signal phase, small reductions in delays
- Results in increases to travel times to/from Rowe Street
- Would impact emergency response to/from Rowe Street
- Would require smaller radius for cul-de-sac
- Impacts stream crossing on Rowe Street
- Right-of-way impacts for cul-de-sac installation
- Would eliminate on-street parking on Rowe Street

Option 3: Rowe Street Closure



Questions?