



Milton Engineering & Public Works Department
in partnership with
Neponset River Watershed Association
2173 Washington Street
Canton, MA 02021

Non-Profit Org.
U.S. Postage
PAID
Boston, MA
Permit No. 54080

*****ECRWSEDDM****

POSTAL PATRON
MILTON, MA 02186

Dear Milton Residents,

Milton has incredible natural resources, from the Blue Hills to the Neponset River. Our local brooks and streams support a diverse wildlife community and a great variety of recreational opportunities. We aim to keep it that way.

Unfortunately, Milton faces a problem with stormwater pollution, which occurs when runoff from parking lots, roads, driveways, and sidewalks carries pollution into our waterways. This pollution can make water bodies unsightly, and unsafe for swimming, boating, fishing, and other recreational activities. It can also harm the fish and wildlife that depend on our streams.

Through a partnership with NepRWA, we have been able to secure grants to help cover the cost of completing important stormwater initiatives, like the Wendell Park project described on the back of this brochure.

Stormwater runoff is a problem that involves the entire community, and simple steps like those described in this brochure can make a big difference when it comes to preventing water pollution. Thank you for doing your part to keep Milton's water clean.

Sincerely,

Chase Berkeley
Milton Department of Public Works

Preventing Water Pollution at Wendell Park

The Town of Milton recently partnered with the Neponset River Watershed Association (NepRWA) to install special street trees along Wendell Park to combat harmful runoff pollution.

Called "tree filter boxes," these special trees collect rain water from nearby streets and filter it through specially engineered soils before discharging cleaned water to Wendell Brook.

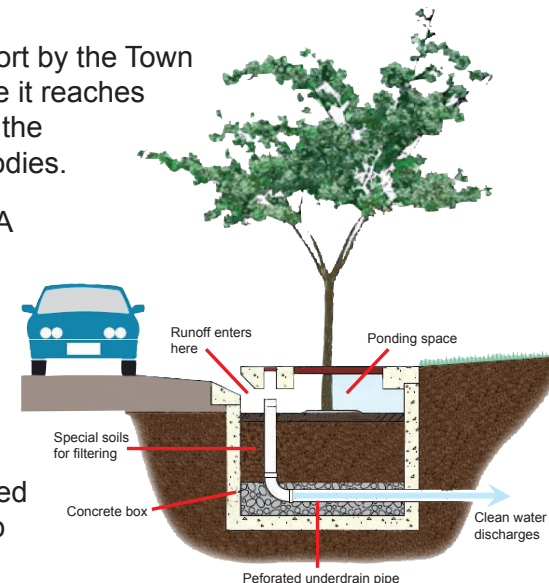
The tree filter boxes remove pet waste, sand, oil, fertilizer, and other pollutants that get rinsed off the street during rainstorms before they get to our waterways. The town had previously installed similar structures at the corner of Lincoln St. and Brook Rd.

This project is part of a larger effort by the Town to clean up runoff pollution before it reaches Pine Tree Brook, Unquity Brook, the Neponset River, or other waterbodies.

Milton has partnered with NepRWA on three similar stormwater upgrades in the past, and was recently awarded grant funds to upgrade the Milton Police Station.

Residents and businesses are encouraged to do their part to clean-up runoff pollution generated from their properties to help keep our local waters clean.

For project ideas visit www.yourcleanwater.org



This project has been financed with federal funds from the Environmental Protection Agency (EPA) to the Massachusetts Department of Environmental Protection (the Department) under an s. 319 competitive grant. The contents do not necessarily reflect the views and policies of EPA or of the Department.

The project has been implemented, in part, by the Neponset Stormwater Partnership, which brings communities together to stop water pollution and reduce flooding caused by stormwater runoff.

Partners include the towns of Canton, Dedham, Foxborough, Medfield, Milton, Norwood, Quincy, Sharon, Stoughton, and Westwood. The Partnership is coordinated by the Neponset River Watershed Association and the Metropolitan Area Planning Council. Learn more at YourCleanWater.org

Keep Milton's water clean for future generations.

Dirty water is a big problem.



Like most towns in Massachusetts, Milton has many acres of pavement and concrete.

When rain hits these hard surfaces, it washes pollutants like pet waste, bacteria, oil, litter, fertilizer, and grass clippings into storm drains, which then lead directly to local waterways.

Water that flows into storm drains is NOT treated—and pollutants on the street flow directly into streams and ponds, affecting the health of drinking water, wildlife and recreation.

Read this guide to learn how you can help stop water pollution in Milton and visit www.yourcleanwater.org for even more information. The Milton Department of Public Works appreciates your help in keeping the local waterways in our community clean and healthy.

Make simple changes around your home to stop water pollution.



Bacteria from pet waste is a major source of pollution. Always pick up after your pet and throw waste into a trash can, not a storm drain.



Redirect water from your roof, driveway, or even the street onto a **lawn or wooded area** where it can soak into the ground naturally.



Install a rain barrel to capture rain from the roof for later use. Rain is **free of chlorine**, and great for watering plants, or washing garden tools.



Lawn fertilizer, grass clippings and leaves are high in phosphorous, a major pollutant. Keep these items away from paved areas and storm drains.



Rain gardens are shallow, **plant filled “basins”** about six inches deep that collect and absorb runoff from roofs, sidewalks, or streets.



For patios or driveways, use materials that allow rain to pass right through to the soil, like pavers, bricks, or **porous concrete and asphalt**.

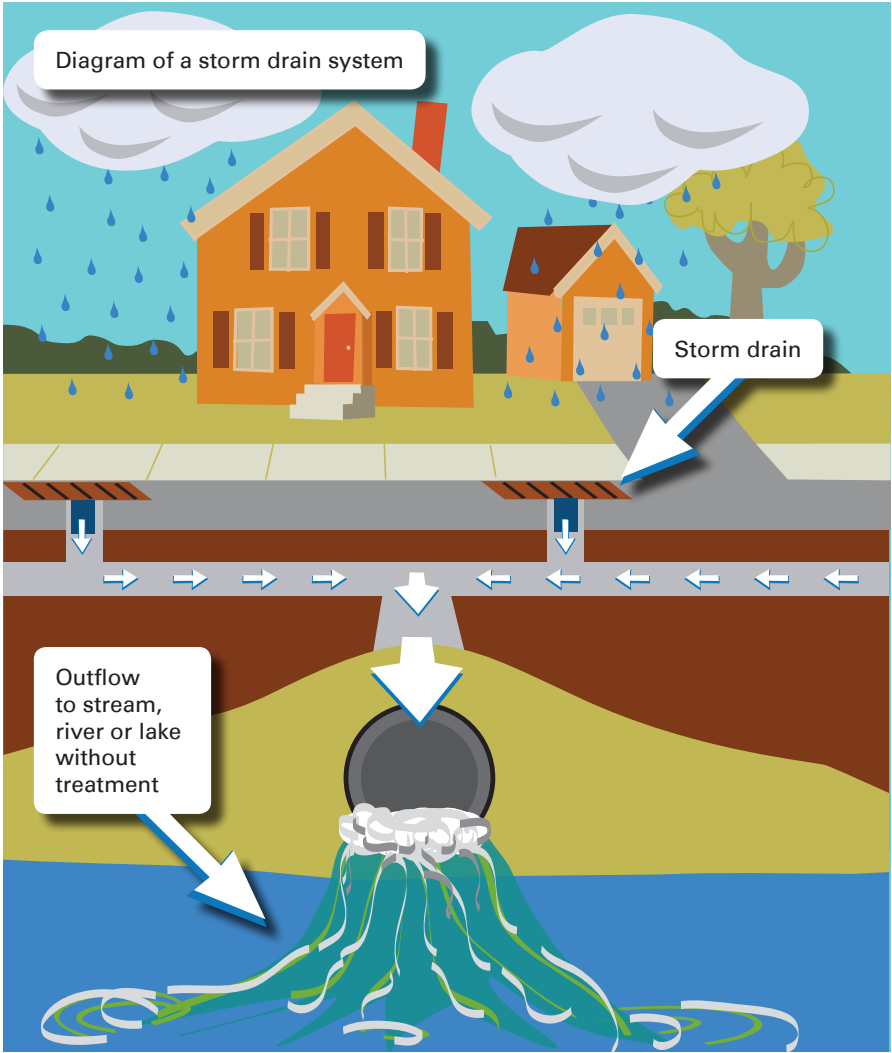


Use ice melt sparingly to minimize the **harmful effects of salt** on our environment. “Pet safe” products are a good choice.

To find out more ways to help prevent water pollution around your home, businesses and schools, visit www.yourcleanwater.org

For more information about the Wendell Park Tree Filter Box Project, or general stormwater questions, contact Milton DPW Environmental Coordinator, Hillary Waite at hwaite@townofmilton.org or call 617-898-4968

Discover what the Neponset River Watershed Association does to protect your water, wildlife and land by visiting www.neponset.org



Remember, if it goes into the drain, it goes into the river.

Household Hazardous Waste Disposal Day

September 15, 2018
9am—12 noon
DPW Yard, 629 Randolph Ave.

The DPW aims to keep hazardous chemicals and yard waste out of our waterways through proper disposal.

You can drop off items like pesticides, oil-based paints, fertilizers, solvents and varnishes, pool chemicals, and kitchen cleaners.

For a full list of what to bring, visit townofmilton.org/departments-public-works

Yard Waste Collection

Yard waste is collected from spring to fall. Yard waste includes leaves, grass clippings, and small branches.

You can set out yard waste in paper bags or barrels labeled “Yard Waste”. Sticks may be set out in bundles of less than 40lbs.

Yard waste pickup dates this season are as follows. Pickup will occur on the same day as your trash day.

- August 15-16
- September 12-13
- October 10-11
- October 31-November 1
- November 14-15
- November 28-29
- December 12-13

Questions? Call the Milton Department of Public Works at 617-898-4900.