

Article 3

**Would give the Select Board a vehicle
for approving one-day liquor licenses
for events on town-owned property**

**Currently, the sale and consumption of
alcohol is not allowed on town
property.**



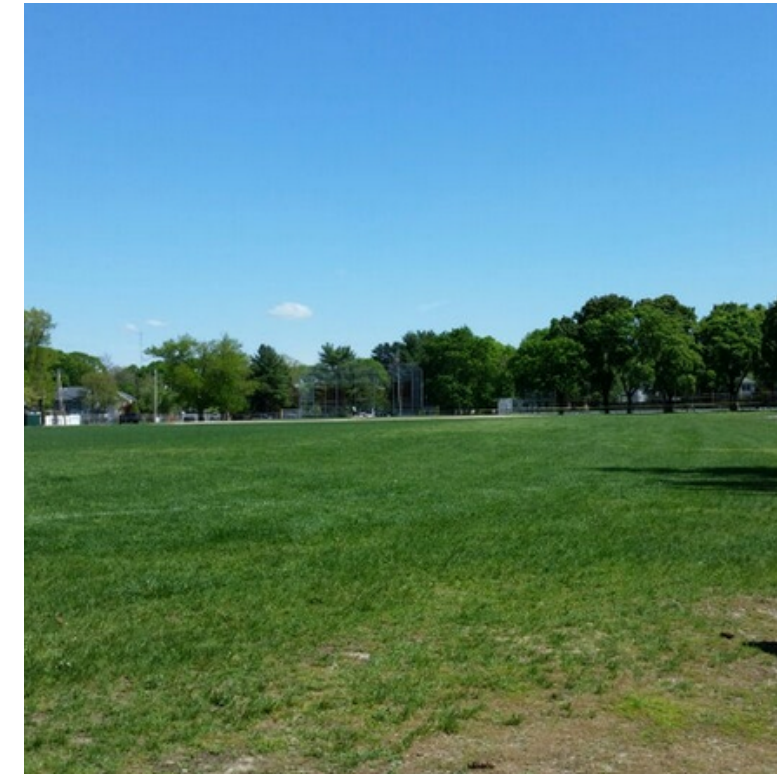
✓ **fundraisers in places like the library and the Council on Aging**



✓ **renting out of spaces for private events for revenue that can support our institutions**

✓ **adults only community-building events, similar to what we see at the Milton Art Center**

“or upon land owned by the town of Milton”

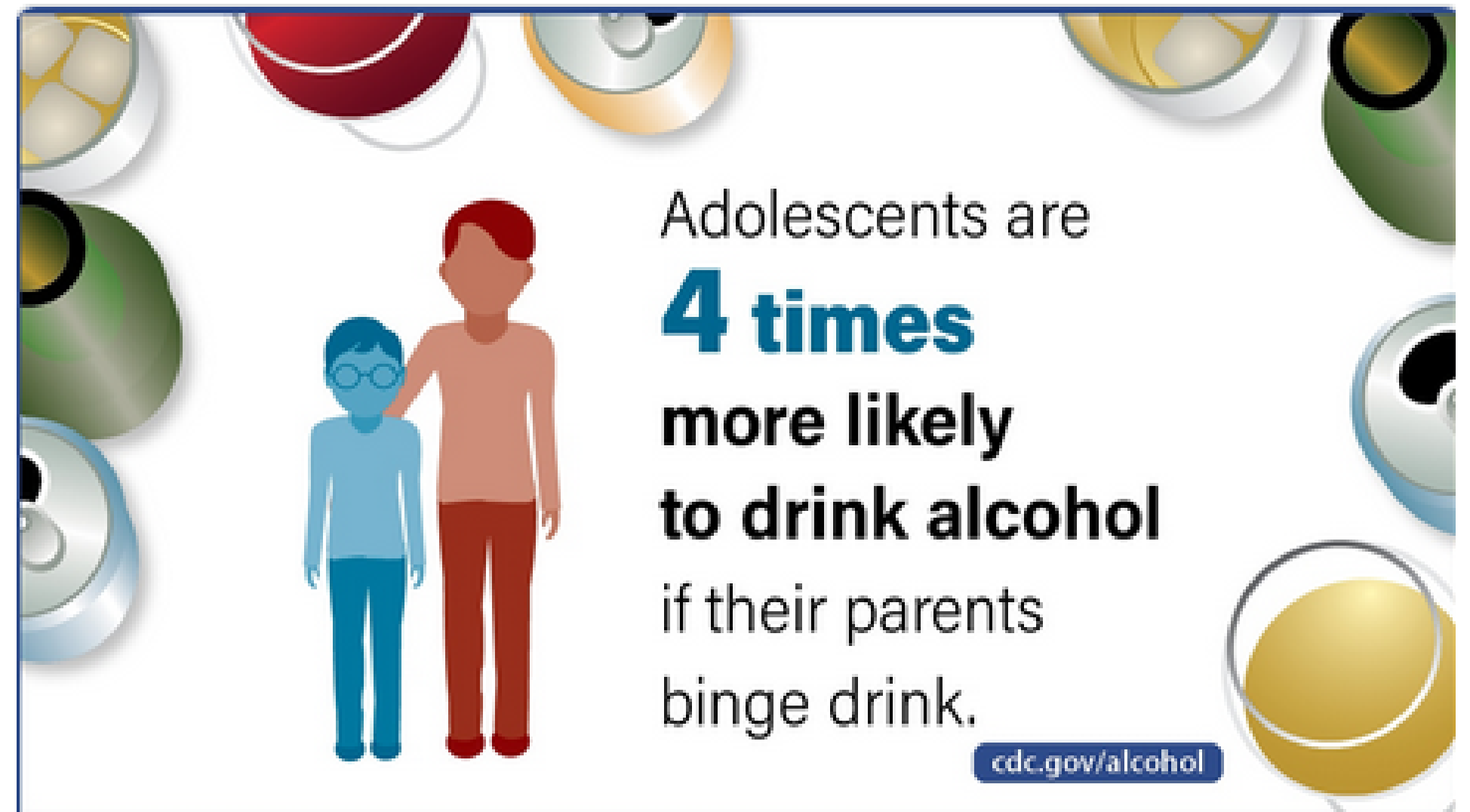


**Or any of the other
fine parks in Milton**



Why is it not recommended that the town allow alcohol sales and consumption on town land?

- Adult alcohol use can increase underage drinking.
- Adolescents whose parents drank 5 or more days per month were significantly more likely to drink alcohol than adolescents whose parents didn't drink.



Alcohol policies
*impact the culture of
our community*



Milton has been working hard to change the culture around alcohol. This is hard work that takes a long time. Adopting this policy would be going in the wrong direction.

Effects of Underage Drinking

Social, academic, and legal issues:

- More school absences.
- Lower grades.
- Drinking and driving.
- Misusing prescription drugs or using illicit drugs.

Physical and mental conditions:

- Violence, including homicide, suicide, and sexual violence.
- Injuries.
- Not growing as expected.
- Slower brain development.
- Sex without protection.

Lastly, people who start drinking earlier in life have a higher risk of using alcohol excessively or developing alcohol use disorder later in life.

(CDC)

Economic Costs of Excessive Alcohol Use

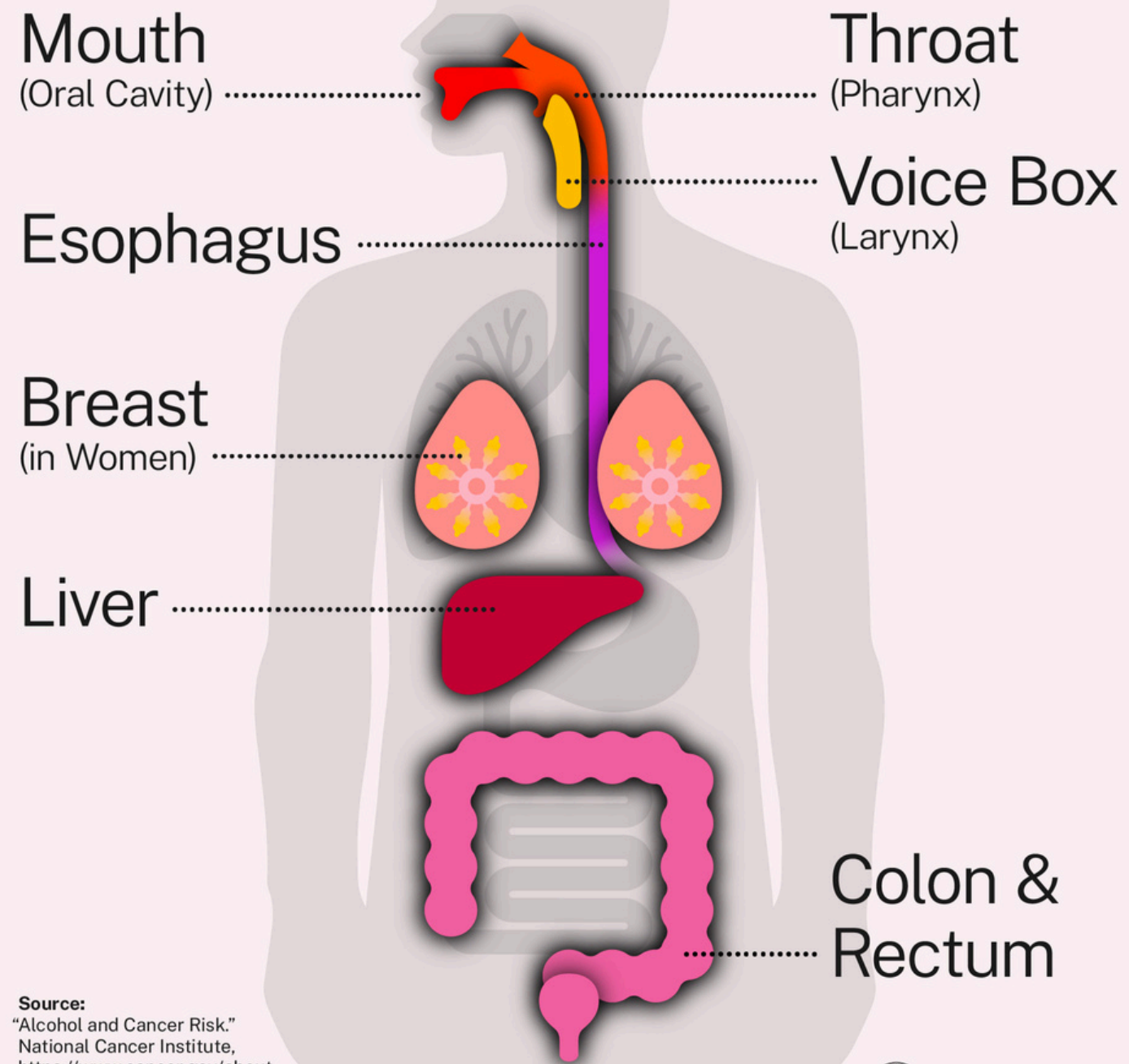


**In MA (2010) alcohol problems
cost the MA economy:**

- **\$5.6 billion,**
- **or \$861 per person,**

**in lost productivity, property
damage, health care, criminal
justice, and other costs.**

Consuming alcohol increases the risk of developing at least 7 types of cancer



Source:
"Alcohol and Cancer Risk,"
National Cancer Institute,
<https://www.cancer.gov/about-cancer/causes-prevention/risk/alcohol/alcohol-fact-sheet>

Office of the
U.S. Surgeon General



Alcohol also contributes to violence, depression, suicides, and individual and family trauma.

Milton is not immune.

- **Alcohol is the most commonly used drug in Milton among youth.** (2024 YRBS, MHS)
- **Milton adults consider alcohol to be a top health challenge.** (Milton Community Health Assessment, 2024)
- **14% of older adults in Milton drink excessively vs. 9% in MA** (MA Aging Profile Report)
- **In MA (2019), 55,050 ER visits were alcohol-related.**
- **In 2019, alcohol-related disorders were among the top 10 most common primary diagnoses in MA.**
(Alcohol, Health and Safety In Massachusetts: A Status Report, 2022)

**Milton saw a 54% decrease in
alcohol use among youth
over the last 10 years!**



The longer you delay
alcohol use the lower the
chance of alcohol use
disorder in the future.

30-day alcohol use rates from 2014 to 2024 as
measured by the MHS YRBS

**Please vote yes on the
amendment to Article 3**