



Tighe&Bond

Engineers | Environmental Specialists



ANDREWS PARK

MILTON, MA TOWN WIDE RECREATIONAL MASTER PLAN

July 29, 2025

Ryan Morrison, Allison Koch, and Town of Milton representatives



MILTON
MASSACHUSETTS

KEY PERSONNEL



**JOSEPH VIAMARI, JR, PE,
LEED AP**
Tighe & Bond
Senior Vice President



RYAN MORRISON, PE
Tighe & Bond
Project Manager



SHARON ROONEY, AICP, PLA
Tighe & Bond
Principal Planner



ALLISON KOCH
Tighe & Bond
Planner



ANDREW HOVEY
Halvorson / Tighe & Bond
Studio
Landscape Architecture/Graphic
Design



KATIE WEAVER
Tighe & Bond
GIS Project Manager

The background image shows a park scene. In the center, there is a white wooden gazebo with a brown roof. To the left of the gazebo, a tall flagpole holds an American flag. The park has green grass, and in the foreground, there is a wooden bench with black metal supports. The sky is blue with some light clouds.

TOPICS FOR DISCUSSION

1. What is a Town-Wide Recreational Master Plan?
2. Project Approach & Timeline
3. Current Work: Data Collection & Analysis
4. Community Engagement Opportunities
5. Project Schedule & Next Steps

TOWN-WIDE RECREATIONAL MASTER PLAN



MILTON HIGH SCHOOL

WHAT IS THE TOWN-WIDE RECREATIONAL MASTER PLAN?

- **The Master Plan is a roadmap for the future of recreation in Milton. It will:**

- Evaluate current recreational facilities
- Understand community recreation patterns
- Identify gaps, needs, and opportunities
- Recommend strategic improvements



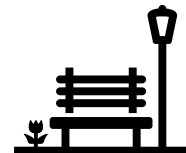
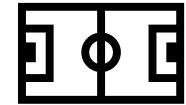
WHAT WILL THE MASTER PLAN LOOK LIKE?

- **The Master Plan will be developed in three key stages:**
 - **Draft Facilities Assessment Report**
 - Comprehensive evaluation of existing facilities
 - Analysis of current conditions, capacity, utilization
 - Preliminary recommendations for improvements with mapping
 - **Report Refinement Process**
 - Round of revisions based on Town review and feedback
 - Incorporation of additional stakeholder input
 - Alignment with Town's priorities and budget considerations
 - **Final Town-Wide Recreational Master Plan Report**
 - Complete strategic vision for Milton's recreational future
 - Prioritized improvement recommendations with implementation timeline

PROJECT APPROACH & TIMELINE



PROJECT APPROACH & TIMELINE



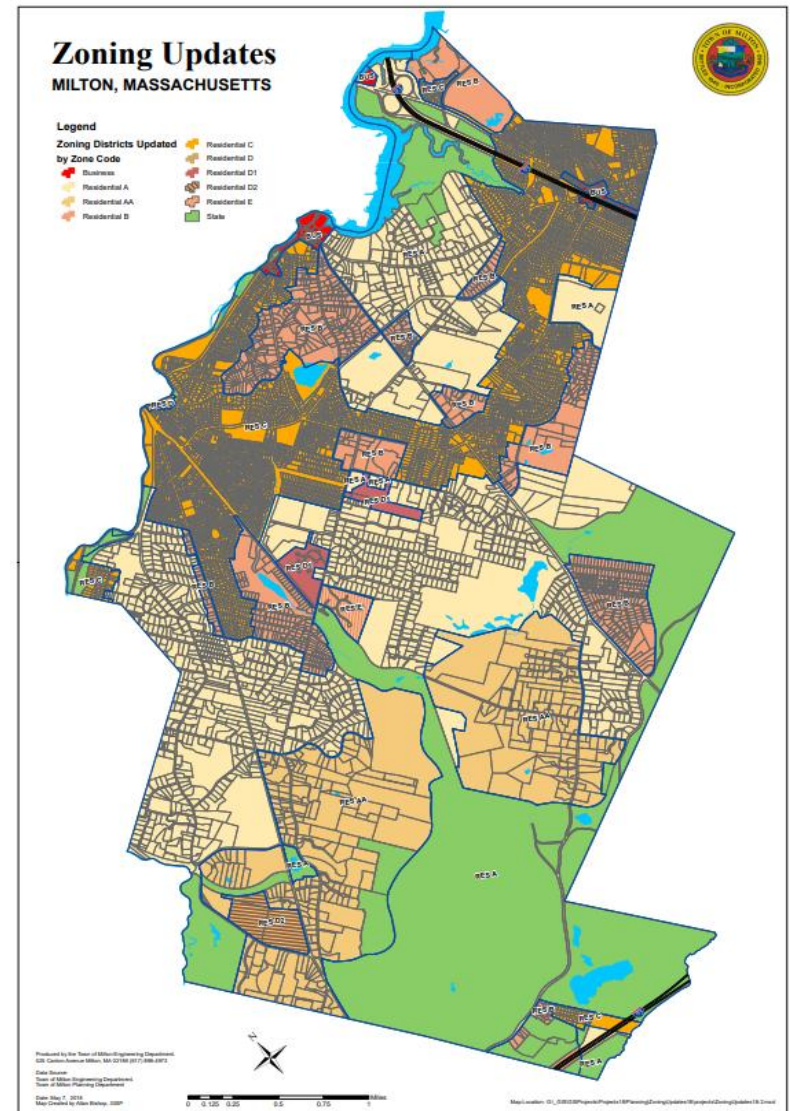
PHASE 1 – RESEARCH & DISCOVERY

- **Town-Wide Recreational Master Plan Kickoff Meeting (*today!*) and Site Visit to Recreational Facilities (*early August*)**
 - Identify key stakeholders and team members
 - Discuss project goals and objectives
 - Integrate existing planning initiatives/studies
- **Documentation & Data Collection (*July – September*)**
 - Review mapping, local planning documents
 - Assess Town's current practices, operations, maintenance, programming, and recreational record keeping systems
 - Analyze demographic, housing, and population trends

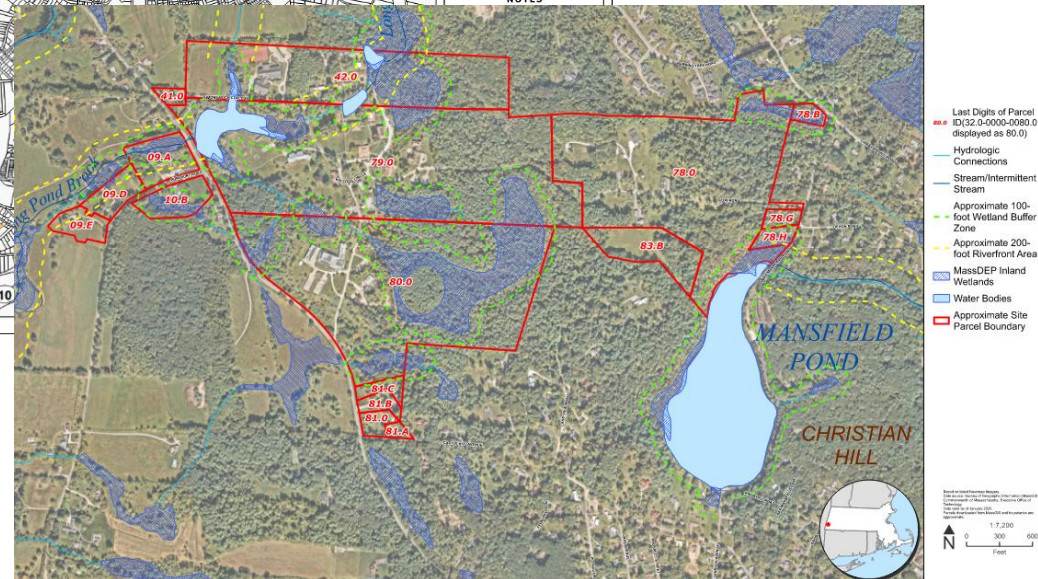
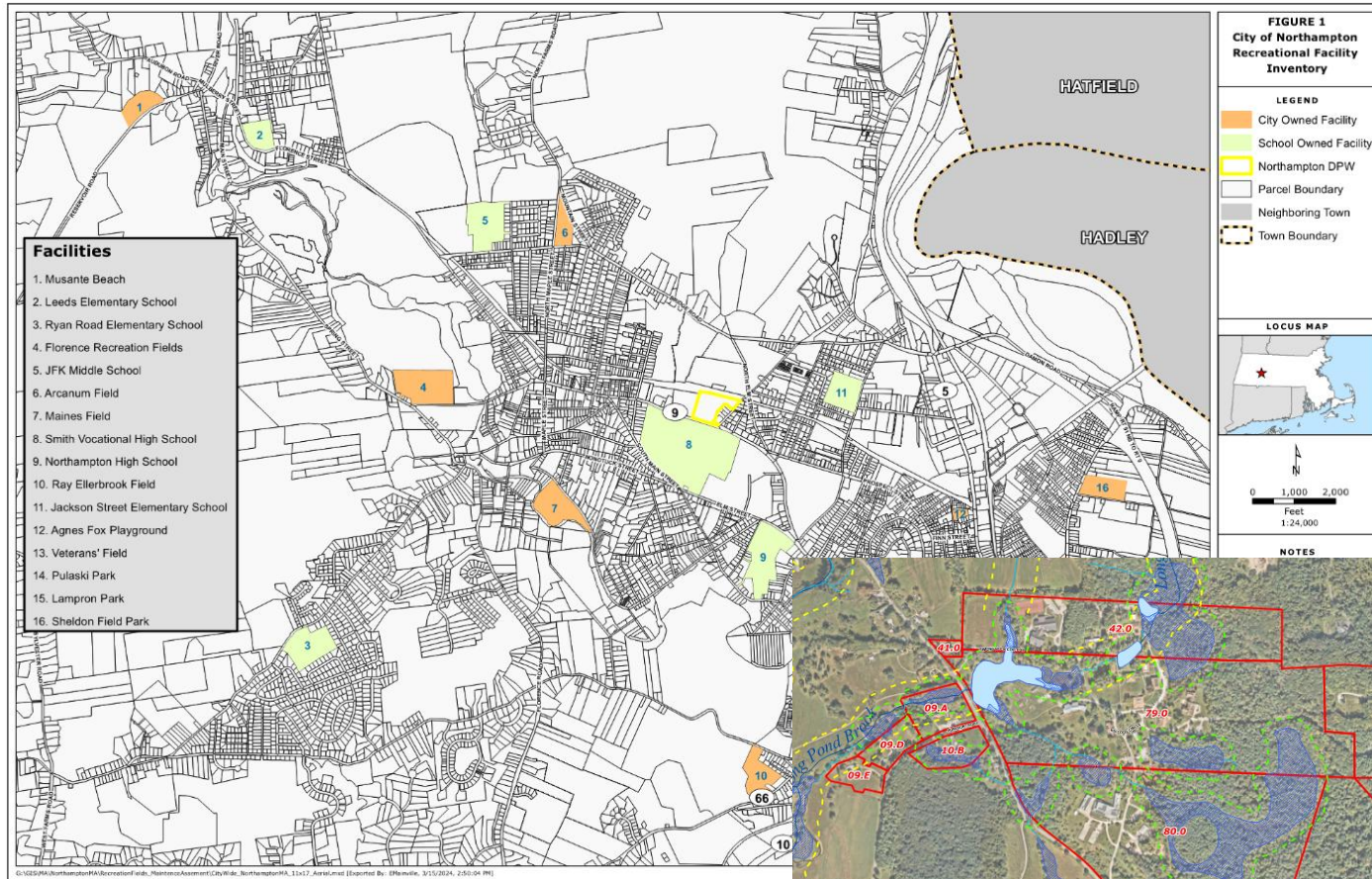
PHASE 1 – RESEARCH & DISCOVERY

- **Recreational Group Data Collection**
(ongoing)

- 1-on-1 meetings with recreational groups & stakeholders
- Discuss experiences, challenges, needs, and priorities
- Document usage patterns and constraints
- Explore partnership opportunities



GIS & DATA COLLECTION



GIS & DATA COLLECTION



PHASE 2 – COMMUNITY ENGAGEMENT

- **Public Meetings**

- Two (2) in-person and one (1) virtual community meetings
- Gather community insights on open space/rec needs and priorities

- **Project Website**

- Central hub for Recreational Master Plan information
- Keep residents informed throughout the planning process



PHASE 2 – COMMUNITY ENGAGEMENT

- **Survey 123 Development**

- Customize community survey to collect additional or supplemental information not captured by 1-on-1 meetings (photos, comments, questions)

- **Community Partnerships**

- Engage with local institutions (Curry College, Milton Academy) to explore opportunities for collaboration and support

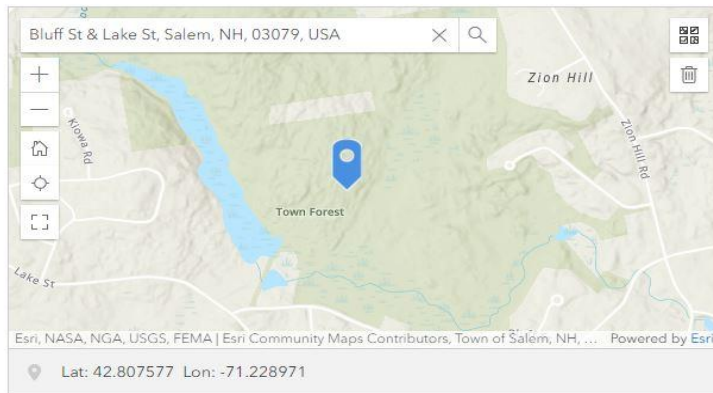


OUTREACH TOOLS

Salem NH - Public Recreational Outreach

Which park do you use most often?

Please place a pin on the map below:



Which park do you wish had more facilities?

Where in town are more parks of open space areas needed?



Home | Your Government | Departments | Public Works | Divisions | Engineering
Projects | MVP Project: Culverts in Billerica | FAQ

Frequently Asked Questions

What specific issues are you looking for during this assessment?

What specific issues are you looking for during this assessment?

- We will be evaluating roadway condition, culvert size and condition, and characteristics of the streams.

How often are these assessments conducted, and when is the next one scheduled?

- The majority of the Town's culverts were assessed in 2023 as part of the Town's Stormwater Asset Management Project. High priority culverts will be visited this fall (November/December 2024) to gather additional data.

Will the assessments have any impact on traffic or access to my property?

- Culvert assessments will not impact local traffic; no road closures will occur. Assessments are limited to the structures under the roadway and the stream channel off the road. Tighe & Bond and DPW staff will be onsite, and the Town will provide additional notification via News Flashes on the [Town Website](#) and [DPW Facebook](#) prior to this work.

How can residents provide input or feedback regarding a culvert and its condition?

- Contact Christina Papadopoulos, Billerica's Stormwater Engineer, to provide feedback: stormwater@town.billerica.ma.us or 978-671-1300.

Will there be reports or documents available to the public after the assessments are completed?

- Check back here for information presented at the neighborhood meetings. The final report will be posted on the Town's stormwater webpage when available.

<https://www.town.billerica.ma.us/1016/Documentation>

Contact Us



Christina Papadopoulos,
P.E.
Stormwater Engineer

365 Boston Road
Room G7
Billerica, MA 01821

Ph: 978-671-1300

Staff Directory

Quick Links

- [Municipal Vulnerability Preparedness \(MVP\) Program](#)
- [EEA MVP Action Grant](#)
- [MVP FY25 Action Grant Informational Webinar](#)
- [MVP Environmental Justice + Equity Toolkit](#)

[View All](#)

PHASE 3 – ANALYSIS OF EXISTING CONDITIONS

- Site Location
- Environmental Constraints
- Geometry Constraints
- General Site Accessibility
- Safety
- Support Equipment
- Support Buildings
- Notable Drainage Issues

General Facility Evaluation				
	Poor (1)	Fair (2)	Good (3)	Excellent (4)
Site ADA		X		
Site Safety				X
Equipment			X	
Field Geometry		X		
Field Condition		X		
Lighting		X		
Site Drainage and Irrigation		X		
Average Evaluation Score:				2.43

PHASE 4 – VISIONING

• Capital Improvement Plan

- Determine appropriate inventory of facilities
- Community Benchmarking
- Discuss proposed phasing strategy
- High level Opinion of Probable Cost

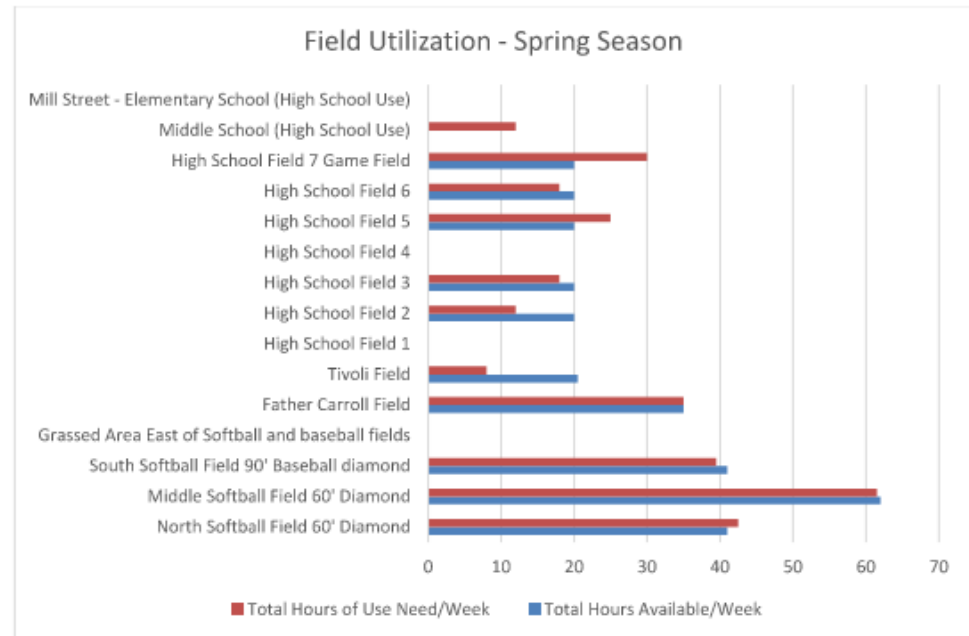


Table 4 -1

Suggested Outdoor Park and Recreation Facilities Based on Population

Facility Type	Mean # of Residents per Facility ⁵	Facilities Required for Red Hook Population	Facilities Provided by Town of Red Hook	Facilities Provided by Private Entities in Town of Red Hook	Field Deficit (Considering Field Condition and Preferred Dimensions)
Diamond Fields: Baseball Youth	6,628	1.7	1 ⁴	1 ¹	0.3
Diamond Fields: Softball Fields Adult	10,957	1.0	1	0	0.0
Rectangular Fields: Multi-Purpose	9,043	1.3	0	0	-1.3
Diamond Fields: Softball Fields Youth	10,495	1.1	1	0	-0.1
Diamond Fields: Baseball - Adult	15,000	0.8	1	0	0.2
Rectangular Fields: Soccer Field -youth	5,584	2.0	0	3 ²	1.0

PHASE 4 – VISIONING

- **Concept Plans/Renderings**
 - Provide up to two (2) schematic level renderings



CURRENT WORK: DATA COLLECTION & ANALYSIS



Site visits

To parks and fields, etc.



Interviews

With Town staff and recreation stakeholders, etc.



Documentation Review

Of past studies and maintenance practices, Town reports, etc.



Mapping and Visual Assessment

Of land use, access, environmental constraints, etc.

LET'S TALK ABOUT FIELDS!

What fields do you or your family use most often?

Are there times when fields feel too crowded or unavailable?

What improvements would make your experience better?

Are there sports or activities that don't have enough space right now?

How important is it to have lights or extended field hours?

Are there field locations you think are underused or overlooked?

Additional Questions to Support Better ADA Accessibility:

Are all users—regardless of ability—able to safely and comfortably access the fields you visit?

Are there paved or stable paths connecting parking areas, fields, restrooms, and spectator areas?

Are there seating or viewing areas that work for people with mobility challenges?

Are there enough benches or shaded areas for those who may need rest while visiting the fields?

Are there accessible restrooms and water fountains near field areas?

Have you noticed any physical or logistical barriers that make it harder for someone with a disability to participate or attend events?

Are the programs and field uses inclusive of all ages, abilities, and activity levels?



Stay Connected & Share Your Ideas!
Visit the Town's project website for updates and resources.
<https://ma-milton.civicplus.com/297/Parks-Recreation>

CURRY COLLEGE

Ryan Morrison/ rmorrison@tighebond.com
Allison Koch/ akoch@tighebond.com



MILTON
MASSACHUSETTS