



Community Vision for Milton: 7 Brush Hill Road & Pagoda Circle Final Report

Submitted to the Milton Masterplan Implementation Committee by
the Metropolitan Area Planning Council

August 12, 2025

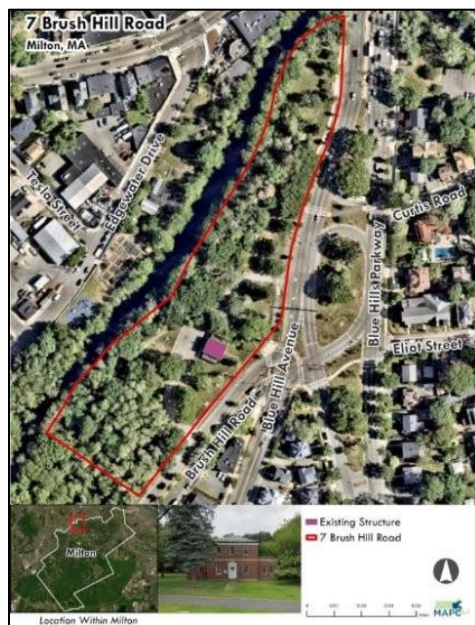


Overview	3
Context	6
7 Brush Hill Road	6
Pagoda Circle	7
Parallel Projects	7
Summary of Process & Engagement Activities	9
Project Scoping & Contracting:	9
Project Kick Off and Engagement:	10
Community Engagement Activities	11
One-to One Conversations	11
Small Group Discussions (Visioning Sessions)	11
Pagoda Circle Block Party	12
Presentation and Q&A Sessions	12
Door knocking	12
Community Survey	13
On Process:	14
What We Heard	14
Recommendations	16
Appendixes	17
Appendix A: Engagement Activities Breakdown	17
Appendix B: One to Ones Summary	23
Appendix C: 7 Brush Hill Road Visioning Session Summary	29
Appendix D: Presentation Slides	35
Appendix E: Pagoda Circle Visioning Session Summary	43
Appendix F: Pagoda Circle Block Party Summary	46
Appendix G: 7 Brush Hill Road Youth Visioning Session Notes	49
Appendix H: Door Knocking Script	50

Overview

The Town of Milton Masterplan Implementation Committee hired the Metropolitan Area Planning Council (MAPC) Community Engagement Department to facilitate a visioning process that allowed residents to consider possible community uses for two sites in Milton:

1. A historic building at 7 Brush Hill Road



2. An open green space at Pagoda Circle





The project started in December 2024 and ended in July 2025. The MAPC Community Engagement team reached over 270 Milton Community Members through a diverse set of approaches, including: one-to-one conversations, small group conversations, block parties, door knocking, and a community survey.

The engaged community members represented different perspectives from the following groups:

- Precincts 1, 5 and 10;
- Milton parents;
- Tucker School Community Members;
- Milton Youth;
- The West Milton Neighborhood Association;
- The Pagoda Circle Neighborhood Association;
- The Milton Equity & Justice for All Advisory Committee;
- Milton Town Meeting Members;
- The Neponset Esplanade Initiative;
- Neighbors to 7 Brush Hill Road;
- Neighbors to Pagoda Circle and others;

The following themes emerged through the engagement that the MAPC Community Engagement team conducted:

- **7 Brush Hill Road:**
 - Desire for a multipurpose, multigenerational community space;
 - Interest in a space that allows for social interactions, food amenities, and capacity for organized and spontaneous physical activities such as Zumba classes and basketball courts;
 - High need for spaces designed by and for youth;
 - A mix of structured and flexible spaces, including reservable areas for gatherings;
 - Concern for safe pedestrian access and traffic management;
- **Pagoda Circle:**
 - Interest in seasonal programming;
 - Emphasis on preserving the natural environment;
 - Concern for safety and accessibility – ranging from installing benches to conducting dead tree clean up;
 - Desire for high involvement from those neighboring Pagoda Circle;





Context

7 Brush Hill Road

7 Brush Hill Road is a building owned by the [Department of Conservation and Recreation \(DCR\)](#). It is part of the [Neponset River Greenway Trail](#), located at the intersection of Brush Hill Road and Blue Hill Parkway on the border between Milton and Mattapan, at [Neponset Esplanade Park](#). The site is on the Northwest side of Milton, located in the most densely populated neighborhood of the town, which includes the highest percentage of renters, lower-income residents, and People of Color. This neighborhood is also a historically red-lined community within Milton and remains the area with the least investments compared to all other town precincts.

In Spring 2025, DCR put out a call for curators via their [historic curatorship program](#). This program would allow one person or organization to become the curator of the 7 Brush Hill Road site. Instead of paying rent, the tenant will cover the cost of upkeep of the building. DCR has a wide array of examples of curated sites, ranging from private family use to the [Charles River Speedway](#) in Allston. The DCR is interested in developing curatorship sites that align with community priorities.

In August 2024, Milton's Planning Department requested MAPC's assistance on behalf of the Milton Masterplan Implementation Committee (MPIC) to conduct a community visioning process around the 7 Brush Hill Road site. The MPIC had received a request for this community visioning process from the Neponset Esplanade Initiative, a Milton community group of neighbors to 7 Brush Hill Road who were interested in applying for the curatorship program. The Neponset Esplanade Initiative's goal is to advocate for community, recreational, and amenity opportunities for the Milton neighborhoods bordering Mattapan and Hyde Park. These neighbors wanted to ensure that they had a complete understanding of community interests as they considered pursuing this opportunity.

- The aim of the 7 Brush Hill Road visioning sessions was to gather additional input from the Milton community, particularly from residents of the 7 Brush Hill Road neighborhood, which includes precincts 1, 5, and 10. The MAPC developed a scope for the project that included the following components:
- 1:1 conversations to better understand community players, key assets and perspectives across different groups in Milton.
- Two engagement opportunities that MAPC would conduct at 7 Brush Hill Road.



Pagoda Circle

Pagoda Circle is a small park space that neighbors have used across generations for walks, pick-up football games, and exploring the small woods. The Pagoda Circle Neighborhood Association has existed for multiple generations around Pagoda Circle. While leadership has changed over time as children grew and new families came in, the association has stayed in touch via an email list-serv and periodic community events, such as block parties.

In September 2024, the Pagoda Circle Neighborhood applied for Community Preservation Funding. The process included extensive and explicit engagement with residents, town employees, officials, and community organizations.

Once the MAPC began the 1:1 conversations, the MPIC requested to expand the scope to include conversations around Pagoda Circle. This involved conducting additional 1:1 conversations with community members about the Circle and incorporating two more engagements focused on the Pagoda Circle. The engagement MAPC conducted was built on the conversations that happened during the Community Preservation Funds application process, aiming to create an understanding with residents, confirm priorities for Pagoda Circle, and help residents deepen relationships with one another.

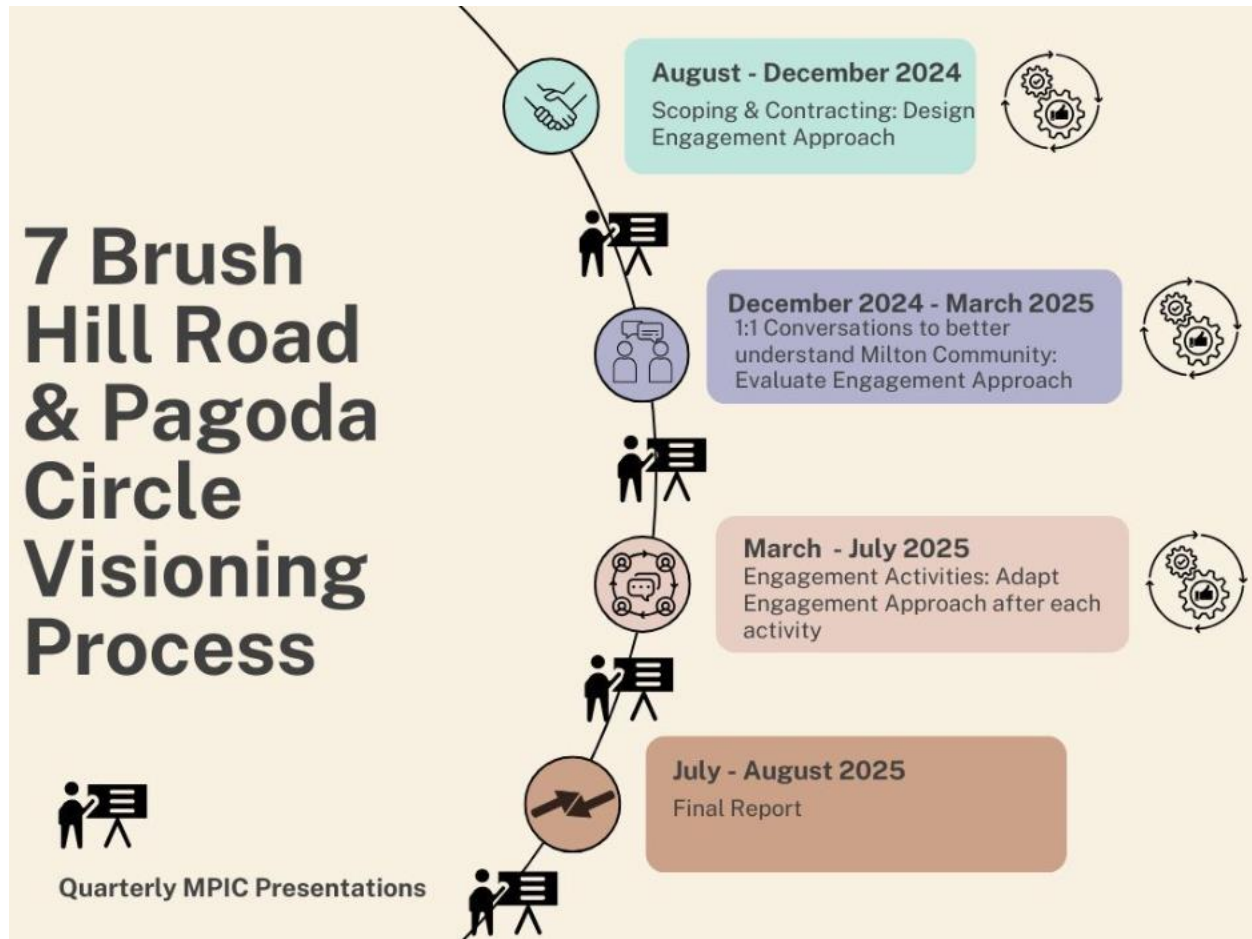
Parallel Projects

Below is a summary of current ongoing parallel projects happening within the surrounding area of 7 Brush Hill Road. There are no parallel projects happening in relation to Pagoda Circle.

Project	Lead	Timeline	Key Points & Connections to 7 Brush Hill Road
Osceola Street Pedestrian Bridge	DCR	Begin bridge construction: Fall 2028 Goal completion: Spring 2030	The Osceola Street Pedestrian Bridge would connect Hyde Park to Milton and Mattapan along the Neponset River Greenway. The Bridge will activate spaces for people on both sides of the river and connect them to resources.
DCR Traffic Study (7 Brush Hill Road & Truman Parkway)	DCR	Publicly available report: Fall 2025	This Traffic Study would identify areas of concern and suggest improvements to 7 Brush Hill Road and Truman Parkway. These

			recommendations would then inform future road improvement work DCR could undertake.
Boston to Blue Hills Project	NepRWA, MAPC, &DCR	Spring 2022 – Spring 2026	This project is a process to determine if community members are interested in a walking, biking, and rolling connection from the Neponset River to the Blue Hills Reservation.
Blue Hill Avenue Transportation Action Plan	City of Boston Transportation Department	2019 - current	This project aims to redesign Blue Hill Avenue to better serve bus riders, create safer conditions for pedestrians and drivers, increase the tree canopy, and install new amenities for a more vibrant small business corridor.

Summary of Process & Engagement Activities



Project Scoping & Contracting:

August 2024 – Town of Milton Planning Department requests support from MAPC for a Community Visioning Process.

September 2024 – MAPC submits a proposed Scope of Work to the Town of Milton Planning Department and the Milton Masterplan Implementation Committee (MPIC).

November 2024 – MAPC & Town of Milton sign a contract for a 7 Brush Hill Road visioning process.



Project Kick Off and Engagement:

December 2024: MAPC Presents the Community Engagement Strategy to MPIC and begins conducting one-to-one interviews.

December 2024 – March 2025: MAPC holds 20 one to one conversations with 22 Milton Community members.

January 2025: MAPC presents a Project Update and a one-to-one summary to MPIC.

January – March 2025: Based on the themes that emerged in the one-to-one conversations, MAPC designs visioning sessions for the spring.

March 2025: MAPC shares a project update to MPIC for upcoming visioning sessions.

March 2025 – July 2025: MAPC holds community engagement activities (for a full outline of activities please see [Appendix A](#)).

- Visioning Sessions (3 sessions total)
- Pagoda Circle Block Party
- Presentations and Q&A Sessions (3 sessions total)
- Door Knocking
- Community-Wide Survey

July 2025: MAPC Provides Project Updates on Community Engagement takeaways and to report next steps to MPIC.

August 2025 – MAPC provides final report to Milton Planning Department, the MPIC and to each person engaged on the project.



Community Engagement Activities

Please note: Please see Appendixes to view engagement templates and examples

One-to One Conversations (December 2024 – July 2025)

The purpose of the One-to-One initiative was to connect MAPC with Milton community members, foster trust, understand community needs, and explore ways to expand outreach. The conversations focused on dreams for the 7 Brush Hill Road Site and/or Pagoda Circle. After each conversation, MAPC asked to connect with more people, enabling us to expand our network as we spoke with community members. While most 1:1s were with Milton residents, several individuals worked in Milton, Mattapan, and Hyde Park.

MAPC spoke to 35 individuals through this portion of the visioning process. Of the people we engaged via 1:1s, seven people helped conduct further engagement, 10 connected MAPC to additional people, and 12 wanted to be kept informed.

The 1:1s offered initial insight into community priorities. Regarding 7 Brush Hill Road, people highlighted the need for a multigenerational community center, for active physical space, and more youth activities. They also spoke about the concern of accessibility and safety at the site. Regarding Pagoda Circle community members highlighted its role in the neighborhood as a gathering space, the ways that people already use the space (dog walks, pick up football games, block parties), and desires for additional/more consistent use (seasonal activities, more gathering opportunities) and infrastructure investments (for accessibility, natural preservation etc.), while maintaining its primary role as a resource for the neighborhood.

Please see [Appendix B](#) for a full summary of One-to-One Conversations.

Visioning Sessions (March – June 2025)

The Small group convenings were centered and built around themes that emerged through the one-to-one conversations. MAPC facilitated three group discussion sessions: two sessions for 7 Brush Hill Road, one with adults ([Appendix C](#)) and the second with youth ([Appendix G](#)), and one session for Pagoda Circle ([Appendix E](#)). These sessions engaged 23 individuals in total. The purpose of the group discussions was to go deeper into the design of priorities that had been raised in the one-to-one conversations. Furthermore, the convenings for Pagoda Circle enabled community members to engage in deeper conversations that had previously been difficult and



uncomfortable to address. Questions that community members were invited to engage in include, but are not limited to, the following:

- What would it take to have a community center at 7 Brush Hill Road?
- What would that community center look like?
- What would a community gathering at Pagoda Circle look like across the seasons?

The 7 Brush Hill Road sessions confirmed interest in a multipurpose, multigenerational community center. Specific elements that participants highlighted included desire for youth spaces to be designed by youth themselves, interest in having a wide array of activities and mix use of space (ranging from gathering space to quiet space), desire for bright, welcoming design and signage and interest in having in-house staff to support those entering the space, especially young people. This session also highlighted the need to understand parallel efforts that may impact 7 Brush Hill Road (noted above in this report)

The Pagoda Circle session sparked a desire for more consistent seasonal activities, including a Halloween event in the fall, a snow-based activity in the winter (weather permitting), community clean-ups in the spring, and block parties in the summer. Participants also expressed high interest in small infrastructure investments that would enhance the Circle's safety and accessibility, such as installing benches and removing dead trees.

Pagoda Circle Block Party (June 2025)

The Block Party was suggested at the Pagoda Circle visioning session with community members—this Block Party at Pagoda Circle aimed to foster community relationships with the site. Residents living near the site supported and volunteered to help promote the event. A total of 11 community members participated.

The Block party moved the discussion from areas of interest to priorities. Building on the key points raised in the visioning session, participants were asked to prioritize which investments should be made in Pagoda Circle. Accessible infrastructure (benches) and safety (dead tree clean up) rose to the top.

Please see [Appendix F](#) for a full summary of the block party.

Presentation and Q&A Sessions (May – June 2025)

To reach involved community groups, MAPC conducted several presentation sessions ([Appendix D](#)), including the Tucker Elementary School PTO and the Edgewater Neighborhood



Association. The sessions included a mix of presentations and conversations, engaging 40 participants. MAPC shared what we'd heard so far, invited feedback on the initial summary of themes, and asked the following questions: "What are we missing?" "Does this align with your experience?"

This effort expanded MAPC's reach, which allowed us to hear from Mattapan community members who live adjacent to the property from the Boston side. The presentations generated suggestions for whom else to connect with and strategies to meet the best people where they are at.

Door knocking (June 2025)

After conducting multiple visioning sessions with low turnout from individuals already connected to 7 Brush Hill Road through the West Milton Neighborhood Association and the Neponset River Esplanade Initiative, MAPC decided to pivot our engagement strategy to meet people where they are – in their homes. In two visits, two MAPC staff and two Milton volunteers knocked on a total of 97 doors, spoke with 29 households, and distributed 100+ flyers for the community survey (see below). MAPC used a digital door-knocking tool to identify homes along Brush Hill Road and Blue Hill Avenue that belonged to Precinct 1 and Precinct 10. Of the 29 households we spoke with, over 50% were engaging with the visioning process and/or any conversation related to 7 Brush Hill Road for the first time.

The conversations confirmed what we had already heard in the 1:1s and visioning process: a desire for a community center, a gathering space, and/or room to play for kids, as well as spaces for young people, food vendors, and community services (i.e., a food pantry).

Door knocking also led MAPC staff to learn about the Milton Food Pantry located at the Parkway United Methodist Church. Following the first day of door-knocking, MAPC joined Food Pantry volunteers to gain a deeper understanding of how the pantry operates. The idea of operating the food pantry out of 7 Brush Hill Road was supported by several food pantry volunteers, along with several residents whom MAPC engaged through door-knocking later in the day.

Please see [Appendix H](#) for a door knocking script.

Community Survey (June – July 2025)

To supplement in-person engagement efforts, MAPC released a digital survey that any Milton community member could complete. This survey was distributed via several Milton chat groups, including the Tucker Parents WhatsApp, the Pine Brook Neighborhood Association, the West Milton Neighborhood Association, and others. See [Appendix I](#) for survey results.



The survey responses confirmed in person engagement – 64% of respondents supported the idea of a community center, with 52-55% supporting recreational facilities and food vendors respectively. Several respondents emphasized the need for youth space and for multipurpose spaces.

On Process:

The engagement process conducted by MAPC was iterative, with each engagement informing the following strategies or activities undertaken by MAPC. For example, the one-to-one informed MAPC of the need for dedicated visioning sessions and presentations to key groups in Milton. The visioning sessions and presentations highlighted the need to reach people through multiple formats, including door-to-door outreach to connect with individuals, a community-wide survey for digital engagement, and a block party to bring community members together in familiar settings.

What We Heard

- **7 Brush Hill Road:**
 - **Desire for a multigenerational, multipurpose community center.** Across all engagements community members referenced desire for a community center. Community members consistently mentioned:
 - ♣ need for flexible gathering spaces
 - ♣ desire for recreational programming
 - ♣ need for dedicated youth space
 - ♣ Interest in a mix of indoor and outdoor recreational space
 - ♣ Desire for space that is welcoming in its design, signage and staffing
 - ♣ Hopes for a food vendor (coffee shop, rotating food truck vendors or a small store were all raised as potential ideas)
 - **Community center (youth focus):** Several community members across engagements, and several young people, shared desire for dedicated youth space. Elements mentioned included:
 - ♣ Desire for bright, dynamic decor
 - ♣ Need for a gaming room with opportunities for gaming tournaments



- ♣ Need for quiet spaces
 - ♣ Need for a mix of activities (puzzles, books, quiet space, interactive space, etc.)
 - ♣ Desire for a social worker to be a source of support for youth coming to the center
 - ♣ Need for availability of space and programming after school hours and on weekends.
- **Outdoor Recreational Space:**
 - ♣ Basketball courts.
 - ♣ Recreational programming (Zumba class, yoga class, walking clubs).
 - ♣ (Safe) access to water for kayaking.
 - **Concerns about:**
 - ♣ Providing safe pedestrian access to a building in a high traffic area
 - ♣ Parking availability.
 - ♣ Increasing traffic density in an already high traffic area.
 - ♣ Organized opposition from other neighborhoods of town, especially with fear of increased connectivity to Mattapan.
 - ♣ Community tensions:
 - Community members regularly noted the stark division between the East and West sides of town.
 - Fear of opposition from neighborhoods in Milton because of connectivity to Mattapan.
 - **Pagoda Circle:**
 - Interest in more consistent seasonal activities at the circle for the neighborhood
 - Desire for infrastructure adjustments, specifically for safety and accessibility:
 - ♣ Installing benches
 - ♣ Levelling the field
 - ♣ Dead tree clean up
 - Desire for natural preservation

Concerns about:



- ♣ Desire for more consistent communication with community members and opportunity for input/decision-making on what happens with the circle.
- ♣ Concern around over-developing the circle.
- ♣ Emphasis on collaboration between community members through regular engagement.

Recommendations

Below are recommendations based on the input received from community members throughout the visioning process:

1. Invest in a multipurpose, multigenerational community space for residents of Precincts 1, 5 and 10. There is agreement that the community members are yearning for a space to gather and connect with one another. We encourage prioritizing investments in these precincts, as they continue to face disproportionate challenges within the town of Milton.
2. Expand access to youth-dedicated spaces and programming, especially after school hours and on weekends, to ensure that young people in Milton have access to safe and fun spaces with their peers.
3. Prioritize safety and accessibility infrastructure for Pagoda Circle, specifically: installation of benches, dead tree clean up, and leveling of the field.
4. Strengthen networks of community groups in Milton. Throughout this project, it became clear that Milton community members are already connected via various groups, whether that's neighborhood associations, parents' groups at their children's schools, through town governance, or volunteer work (such as the food pantry). Throughout this project, we have worked to connect representatives from these various groups to the town, and we encourage continued communication and collaboration to happen between these multiple entities.



Appendixes

Appendix A: Engagement Activities Breakdown

1:1 Conversations	12/09/2024-05/30/2025	35 people engaged
Description: Conversations with Milton community members to gain better understanding of Milton as a whole, the 7 Brush Hill Road and Pagoda Circle sites and community dynamics.		
Key Themes: Desire for community center (multigenerational or youth focused), recreational facilities (for both organized and spontaneous use), food vendors, strengthened outdoor amenities and programming. Historic under-representation and under-service of precincts 1 and 10.		
Relevant Milton Groups: Milton Parents, Friends of Pagoda Circle, Town Meeting Members, Department of Conservation and Recreation(DCR), Milton Department of Recreation, West Milton Community Members, West Milton Neighborhood Association, Milton Youth Task Force, Precincts 1, 5, 10, Neponset River Watershed Association, Parkway Methodist Church, Milton School Committee, Milton Equity & Justice for All Advisory Committee, Tucker Elementary School PTO, Milton Masterplan Implementation Committee.		Milton Individuals Who Helped Host/Facilitate Engagement: Kyle Johnson, Bouba Dieme
Next Steps: Conduct visioning sessions to gain input from additional community members.		

7 Brush Hill Road Visioning Session	03/19/2025	9 people engaged
Description: Small group conversation that included introductions, project overview & context setting, and discussion of the following questions: 1. What helps you feel welcomed in a space? 2. What is needed to make 7 Brush Hill Road & your vision possible? 3. What type of design elements should the building include? 4. What are effective methods for further outreach?		
Key Themes: 1. Desire for dynamic space that is designed in a way that makes people feel welcomed, and where a wide array of indoor & outdoor activities are accessible for all generations; 2. Consideration of staffing and partnerships for this space to be possible;		

3. Need for funds, political will and community involvement to move this forward.	
Relevant Milton Groups: West Milton Neighborhood Association	Milton Individuals Who Helped Host/Facilitate Engagement: Kyle Johnson
Next Steps: 1. Understand how parallel projects in area might impact development of or decisions around 7 Brush Hill Road - include that in final report; 2. Identify a second opportunity for engagement that will meet people where they are at (this eventually turned into a door-knocking effort).	

Presentation to the Tucker School PTO	05/14/2025	10 people engaged
Description: Brief presentation offering overview of project and key themes that had emerged in 1:1 conversations. Discussion include the group's response and ideas for further engagement.		
Key Themes: 1. Confirmation that there is high need for youth space; 2. Suggestions for meeting people where they already are.		
Relevant Milton Groups: Tucker PTO		Milton Individuals Who Helped Host/Facilitate Engagement: Leslie McCarthy
Next Steps: Spread link to 7 Brush Hill Road Survey via PTO Groupchat.		

Pagoda Circle Visioning Session	05/20/2025	10 people engaged
Description: Small group conversation that included introductions, project overview & context setting and a visioning activity looking at Pagoda Circle by the seasons and describing what types of activity are happening within each season. Participants also shared concerns or anticipated challenges, as well as recommendations for future outreach.		
Key Themes: 1. History of Pagoda Circle, balance of organized and spontaneous use; 2. Desire for seasonal activities that can bring people together;		

3. Desire to certain infrastructure adjustments to address accessibility and safety concerns (benches, field leveling), without changing the overall structure/nature of the space;
4. Desire for natural preservation;
5. Desire for any next steps to include consistent community involvement and regular communication.

Relevant Milton Groups:

Pagoda Circle Neighborhood Association

Milton Individuals Who Helped Host/Facilitate Engagement:

Regina Campbell-Malone

Next Steps:

1. Participants recommended hosting a block party, as this is an activity that residents around Pagoda Circle are already familiar with.
2. Participants also recommended conducting earlier outreach with the flyers in order to ensure higher attendance at the block party.

Presentation to Edgewater Neighborhood Association

06/11/2025

20 people engaged

Description:

Brief presentation offering overview of project and key themes that had emerged in 1:1 conversations. Discussion include the group's response and ideas for further engagement.

Key Themes:

1. Interest in anything that would further connect greenway & Mattapan, Hyde Park and Milton residents to each other.

Relevant Milton Groups:

Edgewater Neighborhood Association

Milton Individuals Who Helped Host/Facilitate Engagement:

Vivien Morris

Next Steps:

1. Commitment to follow up with the final report.

Pagoda Circle Block Party

06/22/2025

11 people engaged

Description:

Outdoor block party with stations for activities, this included:

1. Voting on top priorities for investments in Pagoda Circle (developed from input during visioning session);
2. Write a postcard from Milton's future;

3. Badminton;
4. Ice cream truck.

The setting allowed for people to engage in feedback via different formats, in addition to these activities, we received input through conversation.

Key Themes:

1. Infrastructure investments are top priority, specifically benches & dead tree clean up;
2. Participants care about the nature of the space;
3. Desire for continued community involvement.

Relevant Milton Groups:

Pagoda Circle Neighborhood Association

Milton Individuals Who Helped Host/Facilitate Engagement:

Regina Campbell-Malone

Next Steps:

1. Several participants had also been at visioning session, based on participation MAPC considered additional outreach, such as door knocking.

7 Brush Hill Road Youth Visioning Session	06/26/2025	4 people engaged
Description: Discussion with young people over pizza about what they want to see in their community, the conversation focused specifically on how they would design a Youth Center.		
Key Themes: 1. Design that is dynamic & colorful & welcoming; 2. Having an abundance of activities available and variety (games, puzzles, books, quiet spaces, physical sports, etc.); 3. Desire for outside space, i.e. skate park; 4. Infrastructure needs (bike racks so youth can bike there, methods for keeping space open late).		
Relevant Milton Groups: Milton Public Library	Milton Individuals Who Helped Host/Facilitate Engagement: Tyler Vachon	
Next Steps: N/A		

Door Knocking	07/09/2025, 07/12/2025	29 people engaged
----------------------	-------------------------------	--------------------------



Description: Four people over two visits knocked on 97 doors to discuss 7 Brush Hill Road. When residents were unresponsive we left flyers with a QR code to the survey, which generated at least 10 additional responses to the survey.	
Key Themes: 1. Big support of community space; 2. Interest in food vendors; 3. Need for community spaces like food pantry and other community services; 4. Interest in expanded open space.	
Relevant Milton Groups: West Milton Neighborhood Association	Milton Individuals Who Helped Host/Facilitate Engagement: Kyle Johnson, Jo Hanna
Next Steps: For those who did not answer we left flyers to the survey, this generated 10 additional responses to the survey.	

Volunteer at Milton Food Pantry	07/12/2025	10 people engaged
Description: MAPC staff members supported at the Milton Food Pantry.		
Key Themes: 1. Need for more regular food pantry services & for bigger space; 2. Need for more volunteers/capacity to provide food pantry services; 3. Multilingual, multigenerational community.		
Relevant Milton Groups: Milton Food Pantry	Milton Individuals Who Helped Host/Facilitate Engagement: N/A	
Next Steps: 1. Include recommendations about food pantry in report.		

7 Brush Hill Rd Survey	06/17/2025 - 07/18/2025	155 people engaged
Description: Survey distributed via: - West Milton Neighborhood Association; - Pine Brook Neighborhood Association;		



<ul style="list-style-type: none"> - Tucker PTO Groupchat; - Door knocking. 	
Key Themes: 1. Interest in anything that would further connect greenway & Mattapan, Hyde Park and Milton residents to each other.	
Relevant Milton Groups: N/A	Milton Individuals Who Helped Host/Facilitate Engagement: Deborah Milbauer, Kyle Johnson, Leslie McCarthy
Next Steps: 1. Include survey results in report.	



Appendix B: One to Ones Summary

Conversations: 20

- Individuals: 22

Representation From:

- Milton Parks
- Milton Town Meeting Members
- West Milton Neighborhood Association
- Neponset Esplanade Initiative
- Milton School Committee
- Neponset River Watershed Association
- Milton Youth Task Force
- Milton Equity & Justice for All Advisory Committee
- Tucker Elementary School PTO
- Milton Masterplan Implementation Committee
- West Milton Residents
- Pagoda Circle Residents

Themes:

- **Uses for 7 Brush Hill Road**
 - **Multigenerational Multipurpose Use – Community Center (9)**
 - ♣ Including meeting spaces for adults (5)
 - ♣ Opportunity to build community across generations (1)
 - ♣ Cooking classes (1)
 - ♣ Teen night – integrating youth programming as part of multipurpose space vs. sole purpose of space
 - **Youth Multipurpose Space (7)**
 - ♣ Specific ideas:
 - Gaming room (2)
 - Table tennis (1)
 - In-house social-worker to support youth (1)



- Playground (1)

♣ Quotes:

- “We want a space where [youth] can go, be safe, have privacy, but we know they’re safe.”
- “Creating a space where students can have healthy engagement that feels authentic”
- “Has to be done in a way where they have a voice in the planning process, If adults build it, kids are much less likely to embrace it.”

○ **Sports& Recreation (7)**

♣ Specific Ideas:

- Basketball
- Pickleball (1)
- Connection to Neponset Valley Trail (1)
- Yoga (3)
- Jogging/walking groups (1)

♣ Quotes:

- “We want to build a culture itself around movement and use of space – having more communal space for interactions, programming, rather than having amenities for people to individually work out.”

○ **Commercial Activity (6)**

♣ Specific Ideas:

- Coffee Shop (3)
- Modeling off the Speedway (3)
- Youth-Run Shop (1)
- Catina/Food Hall (2)

○ **River Activities (3)**

♣ Canoeing (2)



- Would require safety precautions
 - ♣ Education about Neponset River (1)
- **Election Site (2)**
- **Anticipated Challenges with 7 Brush Hill Road**
 - Accessibility & safety, specifically pedestrian accessibility (8)
 - High traffic area (5)
 - Cost of investment in building restoration (5)
 - Parking (5)
 - Strengthening connection to Mattapan may bring up opposition (2)
 - Water accessibility & safety (1)
 - ♣ Site part of major part of the river designated for major cleanup by EPA (1)
- **Uses for Pagoda Circle:**
 - Block Parties (1)
 - Pollinator Garden (1)
 - Sports activities & infrastructure (1)
 - Challenges:
 - ♣ Challenges with accessibility (2)
 - ♣ Lots of traffic passing by (1)
 - ♣ Lack of adequate lighting (1)
 - ♣ Local community not wanting investment in park so as not to make it more of a destination (1)
 - ♣ Zoning does not allow for businesses (1)
- **Dynamics in Milton:**
 - West Side of Milton gets overlooked and is not invested in (15)
 - ♣ Examples:
 - Playground distribution in recent playground update – everywhere but West Milton (3)

- Denial of requests, such as basketball courts (1)
- ♣ Quotes:
 - “A playground is more than just a playground It's a meeting place for people is where people make friends, is where people run into each other, so any type of community building space is a value add for the neighborhood.”
- o Lack of gathering space and/or competition for gathering space because it is so limited in town (10)
 - ♣ Families are taking their kids outside of Milton to access programming (2)
 - ♣ Town is very engaging/has activities for families with younger children, less so for older children (1)
 - ♣ High need for activities for middle school age (1)
 - ♣ Currently available gathering spots in Milton:
 - Churches (7)
 - o Several people noted that churches can be hard to reach and/or may not always be welcoming to all communities
 - Library (7)
 - o Teen Room (3)
 - The crater (4)
 - o Everyone who mentioned the crater mentioned the negative impact of the space, including drug abuse, sexual assault and other harms young people have faced by going there.
 - Cunningham Hall (3)
 - Steel and Rye(For Adults) (2)
 - Pagoda Circle (2)
 - 7 Eleven (1)
 - Dunkin Donuts (1)
 - Convenience Store at Blue Hills Parkway (1)
 - Basketball court at Tucker (1)
 - Coffee Break (1)



- Open space in front of town hall (1)
 - Kelly Field (2)
 - Ulin Rink (1)
- Precinct 1 and 10 have lowest voter turnout in Milton (4)
- For any activities that happen on West side of Milton, there will be opposition from others in town (4)
- Tucker elementary has highest population of Students of Color (3)
 - ♣ Zoned for title 1 money (2)
- Relationship between Milton, Hyde Park and Mattapan, riverway as a source of unity and source of divide (2)
 - ♣ Examples:
 - Neponset River Greenway Trail – a lot of pushback initially on trail, and now widely considered one of the most beautiful parts of the trail.
- There are a lot of various community groups working to address challenges in Milton, ranging from substance use to racism to mental health to youth needs. (1)
- Milton Community Health Assessment shows disparity in access to movement among white and BIPOC residents (1)
- **Parallel Activities:**
 - Milton Recreational Masterplan: Will include 7 Brush Hill Road in that process, July 2025 start.
 - Neponset Esplanade Initiative: Exploring pursuit of DCR Curatorship Program for 7 Brush Hill Road
 - Parkway Program has offered welcoming space to POC in Milton



- Milton Youth Advocates for Change – student led activist group
- Neponset River Watershed: Edge River Drive Project – an effort to give more people access to green space
- DCR Road Diet for Truman Parkway – would lead to 7 Brush Hill road being an entry point to the Neponset River Greenway Trail in the future
- Equity Committee Audit of Fire, Police, Health and Schools
- Milton Community Health Assessment

Other ideas:

- If 7 Brush Hill Road is not viable, land swap with Hockey Rink (1)
- Focusing efforts on Wharf Park, which can be a town-wide resource, rather than Pagoda Circle, which is more neighborhood specific (1)



Appendix C: 7 Brush Hill Road Visioning Session Summary

Session Summary:

- This session was an opportunity for Milton community members who have been interested in the development and planning involving the Neponset River area to discuss the 7 Brush Hill Road site. We discussed:
 - What helps people feel welcomed in space, including design elements, types of interactions and uses of space;
 - Context for the 7 Brush Hill Road site and DCR Curatorship Program. Based on this context we discussed questions that arose and potential next steps to address those questions and get more information about the site;
 - Envisioned what resources and processes would be necessary to move this effort forward;
 - Discussed recommendations for outreach and facilitation of future visioning session.

Next steps:

- Sasha and Javier will share follow up notes with the group;
- Sasha and Javier will identify what parallel local and state projects may impact/interact with the 7 Brush Hill Road site and its development;
- Sasha and Javier will follow up with DCR to get more details and visuals of the site, including a site plan.

Notes:

What helps you feel welcomed in a space?

- **Design:**
 - Having a welcome desk
 - Having small rooms for phone calls
 - Kitchen for all to use
 - Accessibility (2)
 - Good acoustics
 - Warm/cozy lighting (5)
 - Pillows, carpet, soft spaces
 - Enough space for everyone, so it doesn't feel too crowded (2)

- o Cleanliness of space
 - o Wide, open, airy entryway
 - o Comfortable & varied seating (rolling chairs, bean bags) (5)
 - o High quality materials
 - o Warm color palette (4)
 - o Artwork
 - o Play areas
 - o Interior & exterior spaces
 - o Comfortable temperature
 - o Good flow of design (2)
 - o Background music, but so that others can still hear each other (2)
 - o Accessible parking
 - o Mix of small and large group spaces
 - o “It’s clear you’re meant to stay for a while”
- **Interactions with people:**
 - o Someone to welcome you (6)
 - o “Seeing other people who look like me” (2)
- **Use of space:**
 - o Expectations and roles are clear, so that everyone knows how to use space, how to access amenities and that they can
 - o Having clear signage “Open to All”
 - o Easy to book space
 - o “Rules” are clear to everyone

Context Setting:

- **Questions & Comments that arose:**
 - o Desire for emphasis that 7 Brush Hill should be a liaison/connection between Milton and Mattapan, not a barrier
 - o What are the parameters of use?



- o Can the space be added on?
- **Requests/Recommendations for Moving Forward:**
 - o Starting session with more information/background on the site, what's possible, what has happened so far, etc.
 - o Having visuals of the space (photos, floor plans, the land, etc.) & size, along with parameters for what is physically possible
 - ♣ Providing details on context from DCR, what is possible
 - ♣ Parameters of use
 - o Can we have a visual diagram of all the other projects happening that intersect with this work?
 - ♣ NepRWA Concord Ave
 - ♣ DCR and Traffic Study
 - ♣ Boston to Blue Hills
 - ♣ Boston Transportation Blue Hills Effort
 - o Other potential partners to connect with:
 - ♣ MICA: Milton Interfaith Association
 - Church in Mattapan that is a part of this

Visioning Activity:

- **What do we need to make this space possible?**
 - o Patience
 - o Development & Design of the space:
 - ♣ Design consultants
 - ♣ Multiple test users
 - ♣ Proof of concept for use of space
 - ♣ Community Coalition to exert political pressure
 - ♣ So many bureaucratic approvals
 - ♣ Crowdsourced Funds (3)
 - ♣ ADA compliance



- ♣ CPC Funds
- ♣ Executive Sponsorship:
 - Milton Bid
 - Curry
 - Copeland Foundation
 - Fidelity Foundation (Abigail Johnson Milton Resident)
 - Private Non-Profit Coalition Partnership
 - Crowd-funding for Real Estate
- Community participation:
 - ♣ Membership for investment of community
 - ♣ Political power
 - ♣ Community Buy In (2)
 - ♣ Participation from local neighborhood associations
 - ♣ Input from target audience
 - ♣ Parks and recreation support
 - ♣ Community Input
 - ♣ Appointing a town committee and continuing a coalition model of residents
 - ♣ Trusted 'MAVENS' from town to support vocally and visibly
- Maintaining the space:
 - ♣ Operations team/manager
 - ♣ Youth Activities coordinator
 - ♣ Business partnerships and/or tenants
 - ♣ Revenue generating sources (i.e. rentable workspace)
 - ♣ Insurance
- Community input
 - ♣ Plan for long term maintenance
 - ♣ Long term vision



- ♣ Funding (2)

- **What type of design elements should be incorporated?**

- o Multi-generational
- o Indoor Amenities & Core Design:
 - ♣ Kitchenette
 - ♣ Quite spaces
 - ♣ Art space/gallery
 - ♣ Open space with flexibility for events
 - ♣ Moveable walls
 - ♣ Recording studio
 - ♣ Projector
 - Movies in the park
 - ♣ Music studio
 - ♣ Entrepreneur space for meetings and work
 - ♣ Games or game room
 - ♣ Sound system
 - ♣ Flexible, comfy seating (2)
- o Food:
 - ♣ Outside vendor
 - ♣ Food trucks
 - ♣ Cafe
 - ♣ Milton Egg Program: Chicken coops
- o Outside Amenities:
 - ♣ Bike Racks (2)
 - ♣ Basketball Court
 - ♣ Playground (in fenced area)
 - ♣ Community Gardens



- ♣ Lawn games/adult playground
 - ♣ Easy landscape
 - ♣ EV Chargers
 - ♣ Goats to eat poison ivy (rent-a-goat)
 - ♣ Fitness equipment
 - ♣ Ampitheater outside
 - ♣ Farmers market
 - ♣ Pickleball Courts
- o For the River:
 - ♣ Kayak Launch
 - ♣ A dock

Outreach Strategies for Next Visioning Session:

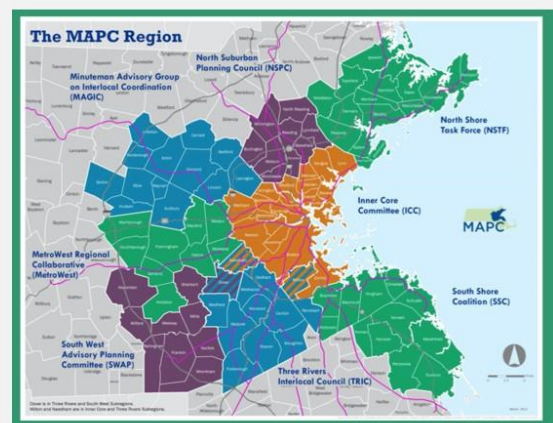
- Go through groups that already convene others (Neighborhood groups, MICA, MARC, etc)
- Host the meeting at Parkway Methodist Church
- Hosting a zoom option
- Partnership for Healthy Milton – a lot of knowledge on grants

Appendix D: Presentation Slides

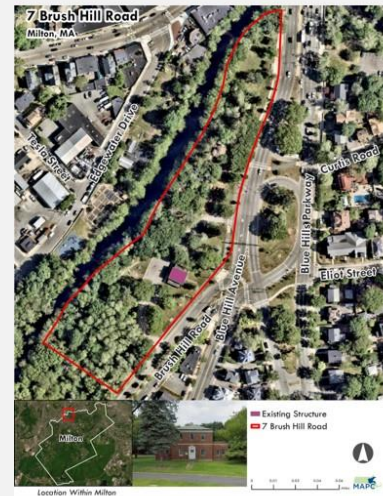


Metropolitan Area Planning Council

- The Metropolitan Area Planning Council (MAPC) is the regional planning agency serving the people who live and work in the 101 cities and towns of the Metropolitan Boston region.
- Our Mission: Work toward a more equitable, sustainable, collaborative, and climate resilient future for the people who live and work in Greater Boston.
- Areas of Work: arts and culture, clean energy, climate, community engagement, land use planning, economic development, environment, housing, public health, public safety, transportation, public procurement



7 Brush Hill Road & Adjacent Parcel:



Location

Northwest side of Milton on Blue Hill Ave south of Mattapan Square sited along Neponset River near Neponset River Path and Mattapan Square

- Area is:
 - Densely populated
 - Highest concentration of renters
 - Highest concentration of people of color
 - Highest concentration of Low-income people

Purpose of MAPC Visioning Effort:

- Gain understanding of the priorities community members (especially those adjacent to 7 Brush Hill Road) have for a potential mixed-use space;
- Document those priorities, ideas and potential collaborations via 1:1 conversations, visioning events and a final report;
- Share that summary with Town Staff and relevant community leaders for future use.
- **We will not be making decisions on behalf of Milton, only reflecting back what we heard. **

Process



September – November:
Scope & Contract
Project

Kick-off meeting with
MAPC & Milton staff



December – February: 1:1 Conversations

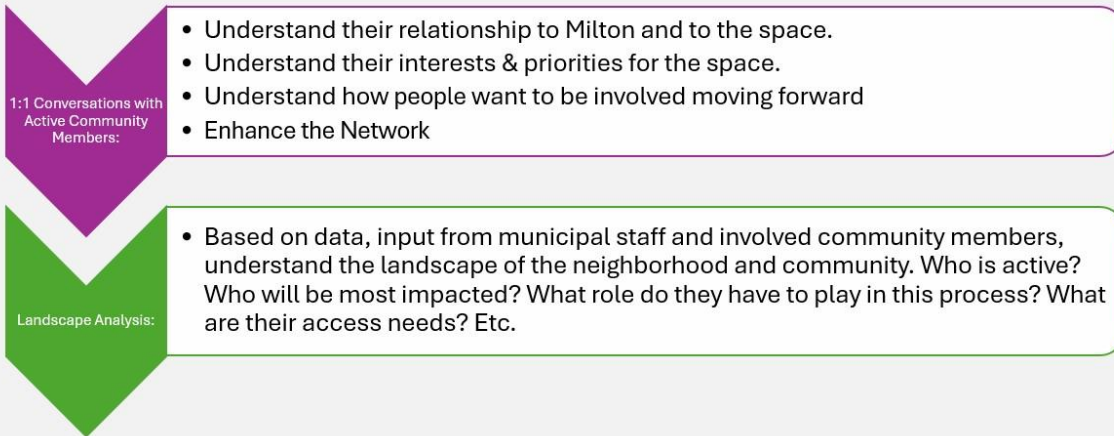


March - June: Community Visioning Events



June: Final Reporting & Project Close

Gaining Context



Curatorship Program:

- Managed by the Department of Conservation and Recreation(DCR)
- Program partners individuals with organizations to rehabilitate, manage, and maintain historically significant properties;
- 7 Brush Hill Road falls under the curatorship program.

Curatorship Program:

- Managed by the Department of Conservation and Recreation(DCR)
- Program partners individuals with organizations to rehabilitate, manage, and maintain historically significant properties;
- 7 Brush Hill Road falls under the curatorship program.

7 Brush Hill Road Possibilities:



Summary: One-to-One Conversations

- Total Conversations: 20
- Represented Perspectives:
 - Milton Parents
 - Friends of Pagoda Circle
 - Town Meeting Members
 - Department of Conservation and Recreation(DCR)
 - Milton Department of Recreation
 - West Milton Community Members
 - West Milton Neighborhood Association
 - Milton Youth Task Force
 - Precincts 1, 5, 10
 - Neponset River Watershed Association
 - Parkway Methodist Church
 - Milton School Committee
 - Milton Equity & Justice for All Advisory Committee
 - Tucker Elementary School PTO
 - Milton Masterplan Implementation Committee

Themes from Discussion:

- **Potential Uses:**
 - **Multigenerational Multipurpose Use – Community Center (9)**
 - Including meeting spaces for adults (5)
 - Opportunity to build community across generations (1)
 - Cooking classes (1)
 - Teen night – integrating youth programming as part of multipurpose space vs. sole purpose of space
 - **Youth Multipurpose Space (7)**
 - Specific ideas:
 - Gaming room (2)
 - Table tennis (1)
 - In-house social-worker to support youth (1)
 - Playground (1)

Themes from Discussion:

• Activity & Amenity Ideas:

- Basketball court
- Soccer field
- Zumba and other group classes
- Gaming room with games available on loan
- In-building social worker for youth
- Lounge/food area (coffee shop or food cart)
- Block Parties
- Yoga classes
- Kayaking or canoeing



Themes from Discussion:

• Anticipated Challenges:

- Accessibility & safety, specifically pedestrian accessibility (8)
- High traffic area (5)
- Cost of investment in building restoration (5)
- Parking (5)
- Strengthening connection to Mattapan may bring up opposition (2)
- Water accessibility & safety (1)
 - Site part of major part of the river designated for major cleanup by EPA (1)

What happens after?

- MAPC will share a final report with Town Staff, MPIC and the folks we engaged throughout the process;
- We hope this can be used as a tool/background information as the Milton community moves forward with next steps on 7 Brush Hill Rd
- We will not be making decisions on behalf of Milton, only reflecting back what we heard.

Next Steps



Community Visioning Events: MAPC will pull together 4 community visioning events to envision what might be possible at 7 Brush Hill Road



Based on the 1:1 conversations and community visioning events, the MAPC team will put together a final report documenting community interests for the parcel, as well as documenting the process for community engagement itself;



The report will include a set of recommendations for next steps that Milton can undertake regarding the parcel.



MAPC Staff will also share the report with all project participants, to ensure they see where their input went and understand next steps.



Appendix E: Pagoda Circle Visioning Session Summary

Session Summary:

- This session was an opportunity for Milton community members, specifically residents around Pagoda Circle to discuss what they love about the Circle, as well as their shared vision for the future.

- **We discussed:**
 - Context for this visioning session and why we were gathering to discuss Pagoda Circle;
 - How this visioning session built off prior visioning work conducted in the community;
 - Seasonal activities at the circle – what can be imagined for each season?
 - Envisioned what resources and processes would be necessary to move this effort forward;
 - Discussed recommendations for outreach and facilitation for a future visioning session.
 - Priorities of Pagoda Circle community members for what they do/don't want to see for the circle.

- **Background context:**
 - In Fall 2024 the Town of Milton Planning Department hired the Metropolitan Area Planning Council, Greater Boston's Regional Planning Agency to support the town in conducting a visioning process for two parcels of land: the 7 Brush Hill Road Site and Pagoda Circle. Both parcels were identified as important community landmarks, and areas that community voices have advocated for additional investment and support.
 - This session was focused on Pagoda Circle specifically and invited those who live next to the circle to share their perspective.
 - The session built off the input community members had already provided in prior opportunities for discussion and engagement, much of which was included in the application for Community Preservation Funds to go towards a feasibility study for the Circle.



Themes from Discussion:

- **Desire for seasonal activities that can bring people together, both organized and spontaneous**
 - BBQs & block parties
 - Seasonal activities (Halloween celebration, movies in the park in the summer, ice skating and sledding in the winter, etc.)
 - Informal sports and pickup games
- **Desire for infrastructure adjustments to address safety and/or accessibility concerns**
 - Benches around the perimeter
 - Filling/grading the holes so people don't trip when walking/running along the field
 - Sidewalk around the park for safe walking
 - Better lighting so people can see where they're going at night (but not too bright for the neighbors)
- **Desire for natural preservation:**
 - Community clean ups
 - Managing light for stargazing
 - Planting seeds for plants that would attract birds and other nature
 - Taking care of the space in a way that preserves its natural form (open rather than manicured)
 - Evaluation by an arborist to confirm what trees need to be taken down or taken care of, so that no more trees fall on people
- **Concerns:**
 - Desire for leadership and having a clear structure for roles
 - Desire for more active communication about what is happening in the circle and/or how decisions are being made
 - ♣ And how community members can provide input on this decision



- ♣ Concern of decisions being made for community members rather than with them
- ♣ Need for community members to be more responsive to asks coming from those who are currently planning activities or events in the circle
- Fear of drawing more people
 - ♣ Not wanting to add parking, add a playground or do anything that would contribute additional traffic
- Desire for safety for kids to play, community members to walk, etc.
- Desire for this to be a site that is for everyone in the community (not specifically for any one given age group), but also that prioritizes those who live near the circle.



Appendix F: Pagoda Circle Block Party Summary

Activities:

- STATION 1: Welcome Table:
 - Sign up sheet
 - Background abt project (on poster board)
 - Postcards from the future
 - Poster Voting: Vote on your top priority for Pagoda Circle
 - ♣ Leveling the field
 - ♣ Cleaning up dead trees
 - ♣ Having regular community events
 - ♣ Regular updates on the community board
 - ♣ Updating lighting for walking safety
 - ♣ Sidewalk access
- STATION 2: Food
 - Ice cream truck
 - Water table
- STATION 3: Bean Bag Toss
 - Poster on Easel: What questions do you have/challenges do you anticipate?
- STATION 4: Seeds & Dreams
 - Table with seedlings + pots, soil & gardening tools
 - Poster on Easel: What seeds for the future do you want to plant for Pagoda Circle?

Milton Postcard from the Future:

MILTON POSTCARD FROM THE FUTURE



Notes:

- **Postcards from the Future:**

- Wildflowers
- Dear Regina, I hope you are well and are enjoying the safer and more accessible. Looking forward to seeing what blooms! Regina
- I hope the park reflects the close, supportive neighborhood that I have experienced for 36 years. - Anne Bishop

- **Priorities:**

- Dead Tree Clean Up: 7 Votes
- Leveling the Field: 6 Votes
- Regular Events: 4
- Regular Updates via a Community Board: 3
- Sidewalk Access: 2 Votes
- Update Lighting for Safety: 0 Votes
- Other:
 - Benches (5)
 - Baseball Field (1)

- **Notes from Conversations:**

- Proposal kicked off tension, people who have lived near the circle for a longer time felt their perspective not reflected;
- Older generations open to things being organized, but don't want to be expected to contribute. Younger folks feeling tension of aversion to things



‘changing’ but then not getting support in organizing the events based on the feedback offered.

- There are ways that people have engaged with the space over the years that have remained: i.e. kids playing in the woods, people walking their dogs. No need to add infrastructure for that.
 - With newer folks there have been safety concerns with the field and with dead trees – advocacy for safety infrastructure has been met with concern about too much infrastructure
- There has been a neighborhood association, some say that it has been more informal, on the flipside newer community members have noted it’s been hard to get included in the association.



Appendix G: 7 Brush Hill Road Youth Visioning Session Notes

Ideas for 7 Brush Hill Road Space:

- Gaming community center;
 - Would include:
 - ♣ Good wifi;
 - ♣ Good devices, with variety of devices available;
 - ♣ Lounge area;
 - ♣ Kitchen;
 - ♣ Big screen for tournaments/communal gaming.
- An afterschool club space for kids looking to do activities not already available at school.

Ideas for Outside:

- Pool or a way to go into the water;
 - If this ends up existing, desire for a private changing area;
- Fishing;
- Fantasy area for LARPing;
- Skateboard rink.

What would make a space feel more welcoming:

- Colorful and/or themed decor;
- Comfortable spaces to sit and talk, but also areas that can be quieter;
- Having the bus route there from school for easy access;
- Having bike racks for kids to park their bikes;
- Having a wide variety of activities available and easy to use (digital games, board games, puzzles, books);
- A massage chair;
- Longer hours.



Appendix H: Door Knocking Script

Canvass Results Key

Engaged: E Not Home: NH Come back: CB

Refused: RF Inaccessible=IN

Hello,

My name is [Your Name], and I'm with (). We're out in the neighborhood today asking residents what they think about the future of the property at 7 Brush Hill Road.

Is this a good time for a quick minute?

If yes, continue,

If no, no worries, We just wanted to let you know we're asking neighbors about 7 Brush Hill Road site and what they'd like to see there.

If you'd prefer, you can share your thoughts online or join us this Saturday at 1pm (we'll be at corner) we're handing out flyers with all the info [Give flyer/leave on door]

Thanks so much!

As you might have heard, the site at 7 Brush Hill Road is currently being looked at by the Town of Milton in exploring possible uses of the property. Then the town wants to hear directly from people who live nearby.

Would you mind sharing a few quick thoughts?

Choose one to two depending on time

- What do you think the Milton community needs most right now?
- How would you prefer the building at 7 Brush Hill Road be used?
- What, if any, concerns do you have about the site?
- What else would you like to share about your hopes for the site?

Thank you so much for sharing your thoughts.

Input from this survey will be included in a report that will be shared with the Town of Milton, along with all survey participants, about the vision Milton community members have for their



future, specifically for this property. The report is meant to reflect people's input, we will not be making any decisions on site use.

Thanks and have a great day!

Adress_____

1. What do you think the Milton community needs most right now?

- Community Center
- Educational or Cultural Center
- Recreational Facility
- Cafe
- Town offices or additional public service space
- Other:_____

2. How would you prefer the building at 7 Brush Hill Road be used?

- Community Center
- Educational or Cultural Center
- Recreational Facility
- Cafe
- Town offices or additional public service space
- Other_____

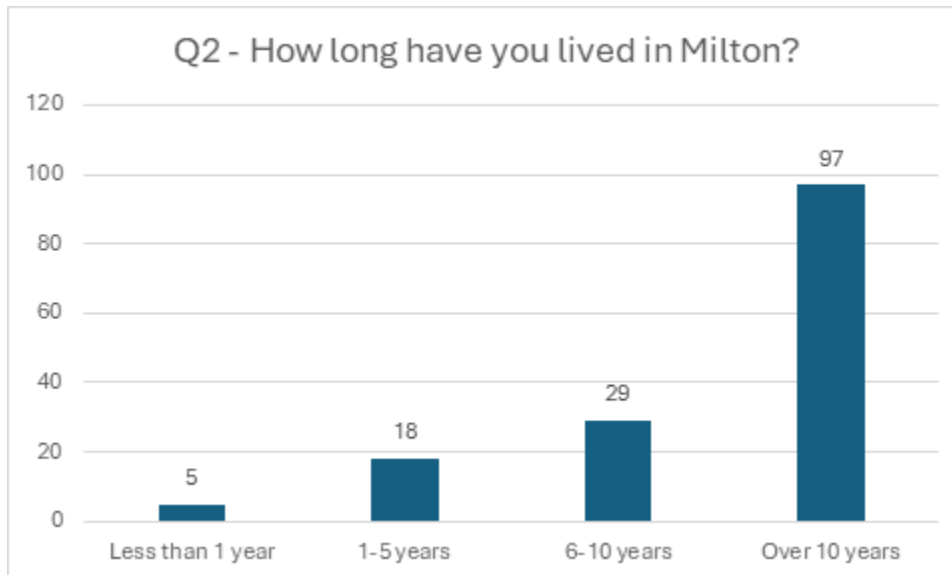
3. What, if any, concerns do you have about the site?

4.What else would you like to share about your hopes for the site?



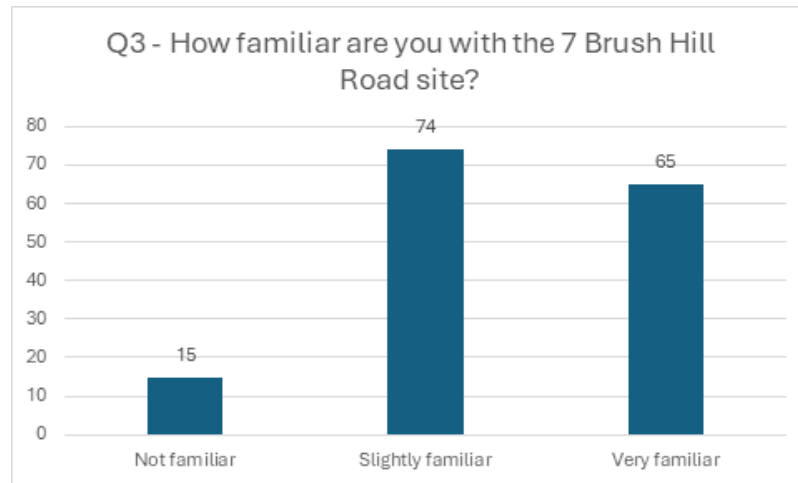
Appendix I Survey Results

1. How long have you lived in Milton?



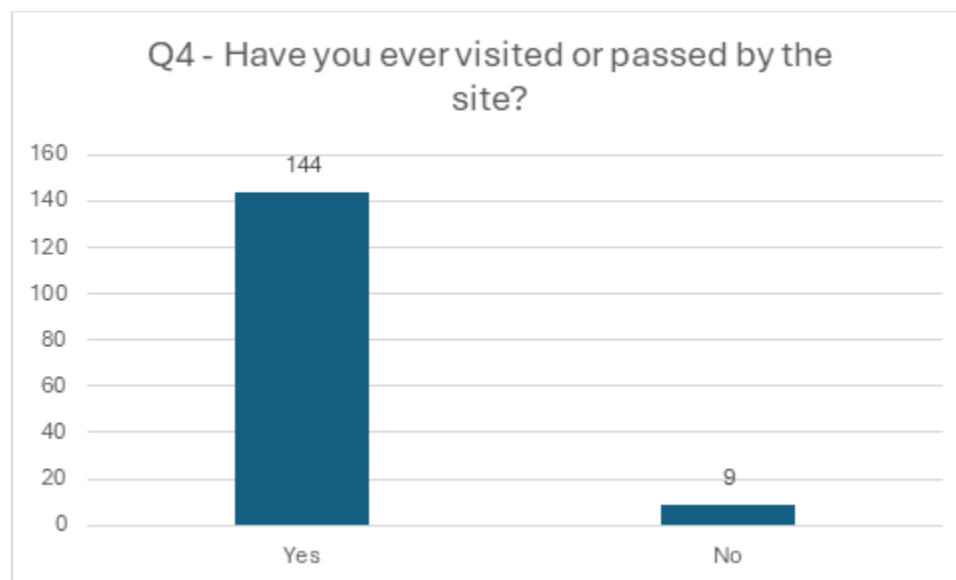
Q2 - How long have you lived in Milton?	Response	Percentage
Less than 1 year	5	3%
1-5 years	18	12%
6-10 years	29	19%
Over 10 years	97	65%

2. How Familiar are you with the 7 Bush Hill Road Site?



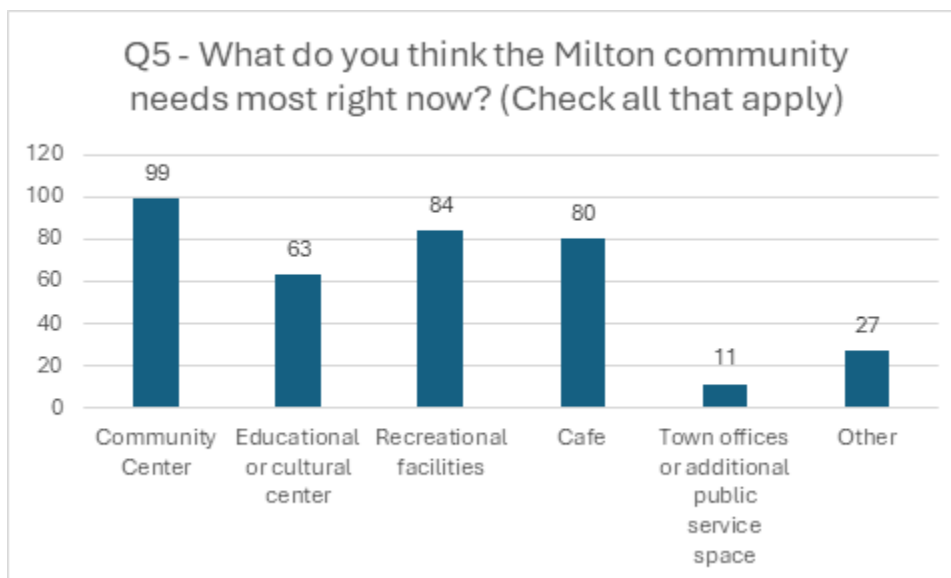
	Response	Percentage
Not familiar	15	10%
Slightly familiar	74	48%
Very familiar	65	42%

3. Have you ever visited or passed by the site?



Q4 - Have you ever visited or passed by the site?	Response	Percentage
Yes	144	94%
No	9	6%

4. What do you think the Milton community needs most right now? (Check all that apply)

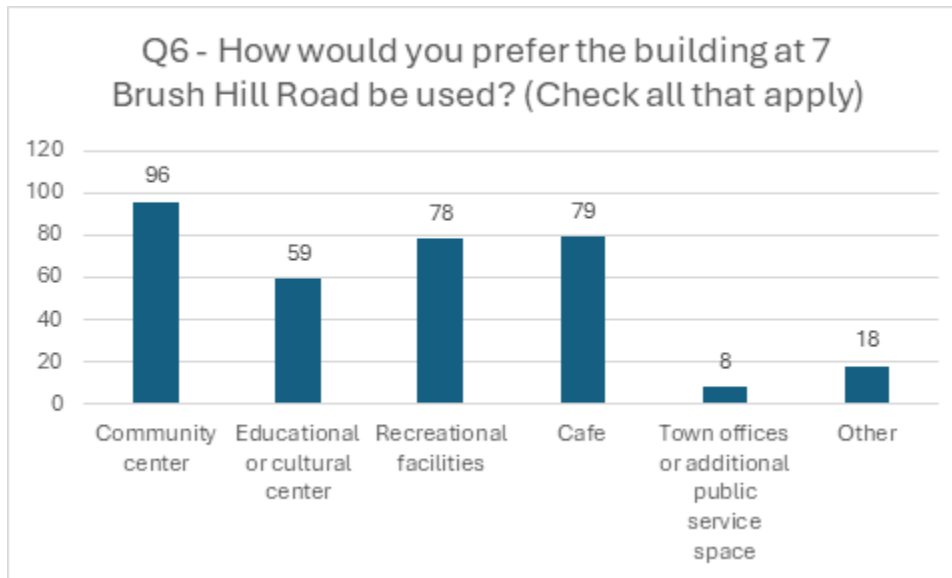


	Response	Percentage
--	----------	------------

Community Center	99	64%
Educational or cultural center	63	41%
Recreational facilities	84	55%
Cafe	80	52%
Town offices or additional public service space	11	7%
Other	27	18%

- Common themes from “Other”:
 - Youth Spaces – Places for youth of all ages to spend time. Respondents recommended things like schools, early childhood centers, after-school programs, teen centers, music spaces, and open studios.
 - Healthy and Affordable Food – Respondents recommended things like a food pantry, farmer’s market, affordable grocery store, or a casual and healthy dining spot.
 - Recreational or Multi-Functional Gathering Space – Respondents expressed a desire for community spaces. Suggestions included a YMCA, pool, nature center, boat rental, park, or sports field.
 - Other miscellaneous suggestions included:
 - A mixed-use or affordable housing, an industry to offset town excise taxes;
 - A brewery/bar;
 - An AA meeting spot.

5. How would you prefer the building at 7 Brush Hill to be used? (Check all that apply)



	Response	Percentage
Community center	96	64%
Educational or cultural center	59	39%
Recreational facilities	78	52%
Cafe	79	52%
Town offices or additional public service space	8	5%
Other	18	12%

- Themes from “other”:
 - A museum;
 - A “permanent DCR facility that is manned with greenway maps, rental bikes, and safety officers, and public bathrooms.”

6. What else would you like to share about your hopes for the site?

The adjectives respondents used to express their hopes for the space included: beautiful, clean, green, welcoming, affordable, family-friendly, multipurpose, and accessible.

Respondents described:



- Space is accessible to them and their surrounding communities.
- Space to be utilized creatively to meet multiple community needs, cultivate a sense of belonging, and accentuate the land, history, and community.
- Space where youth can hang out productively and actively.
- Sports fields, playgrounds, and recreational spaces accessible during the winter.
- Space for green gathering or recreational space that brought together people of all ages and took advantage of its proximity to the river and bike trail. S

Suggestions included:

- A cultural center;
- A community center;
- A community resource center;
- A public bike shop;
- An information center with nature-related programming;
- A park with water access/kayak rental;
- A café.

Less common hopes included housing, commercial use, senior spaces, and educational spaces.

7. What, if any, concerns do you have about the site?

Most common concerns raised:

- Safety, especially given the high traffic around the parcel;
- Parking and accessibility;
- Increased congestion;
- The impact/cost of development and maintenance;
- The space would end up underutilized or unsafe.

Respondents expressed concerns that the project would not happen due to community backlash or cause environmental harm.

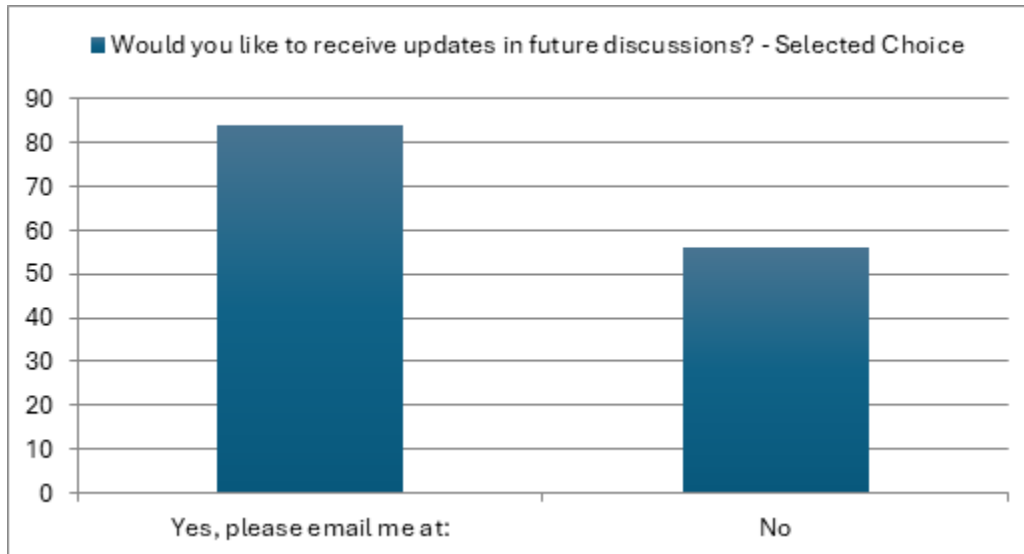
8. What precinct do live in?

The top four precincts of respondents who completed the survey were the following,

- Precincts 4
- Precincts 1

- Precincts 2
- Precincts 10

9. Would you like to receive updates in future discussions?



Yes	60%
No	40%